



ISSUE NO: 151 September 2024

For the Mia Mia- Redesdale Region including:

- Heathcote • Derrinal • Glenhope • Baynton • Sidonia • Barfold
- Langley V Sutton Grange • Elphinstone • Kyneton • Metcalfe

BRIDGE CONNECTION COMMUNITY NEWSPAPER



<https://www.facebook.com/groups/897527781461431/>

Congratulations

*Grace Larson from MIA MIA
National Runnerup for the 2024 Agrifutures Rural Women's Award*



Grace is a paediatric critical care nurse with more than 17 years' experience, Grace teamed up with her sister to address the unfair health disadvantages faced by rural children through [The Sisterhood Project](#).

Their mission is simple: to change the health outcomes for bush kids by delivering life-saving skills to parents and caregivers across rural

Australia, including free infant and child first aid.

Thanks to the Victorian AgriFutures Rural Women's Award grant, Grace can continue to save more children's lives through education with plans for more providers and organisations to come on board.

For the next Sisterhood project see page 18.

The SES Heathcote Unit proudly showcases their emergency response ute, with new valuable upgrades thanks to the Fosterville Community Grant they received.



Fosterville Gold Mine Community Grants – applications now open

The Community Grants Program aims to support initiatives which actively contribute to the growth of our local communities both now and into the future.

Applications open
Friday 23 August at
9am and close Monday
23 September at 5pm



AGNICO EAGLE
FOSTERVILLE

W: fgmcommunity.com.au

E: fgm.community@agnicoeagle.com

Editorial

Hello Readers,

Welcome to Spring dont forget to register your burns @ <https://firepermits.vic.gov.au>

Congratulations Grac Larson from Mia Mia National Runnerup for the 2024 Agrifutures Rural Women's.

Page 19 Register your interest for the Bush Kinder.

upcoming event in the region can be found on page 13.



Regina Bennett

Editor: Regina Bennett
Ph: 0437514223

e: bridgeconnection.editor@gmail.com

Bridge Connection

- Mission Statement -

The mission of **Bridge Connection** is to bring people together by:

1. Providing information about local issues, goals and events, and to celebrate local achievements,
2. Encouraging economic growth in the area
3. Fostering geographic identity, and
4. Providing a platform for public debate

Bridge Connection is published by local people who volunteer, for local people as a **free paper** and on line at **redesdale.net** and via **face-book**



<http://www.facebook.com/groups/897527781461431/>

Keep in touch with us and what's happening in our community.



www.redesdale.net



Redesdale & District Association



[redesdale_vic](https://www.instagram.com/redesdale_vic)



BRIDGE CONNECTION COMMUNITY NEWSPAPER

Advertising Rates/Sizes

Size	Height x Width	Price per issue	10 Editions
Business Card	55mm x 90mm	\$25	\$250
Quarter Page	130mm x 90mm	\$50	\$500
Half Page	130mm x 190mm	\$95	\$950
Full Page	270mm x 190mm	\$175	\$1,750

Colour Advertisements plus 20%.

**Please Note:
COPY DEADLINES
17th OF EACH MONTH**

Please send editorial or advertising copy to:
bridgeconnection.editor@gmail.com
or by post to **Regina Bennett 3465 Burke & Wills track Mia Mia 3444.**
For other editorial enquiries, please phone **0437 514 223**

Bridge Connection Distribution

950 Copies printed and distributed to Redesdale Mia Mia Region, including Barfold, Baynton, Derrinal, Elphinstone, Glenhope, Kyneton, Langley, Metcalf, Sidonia and Sutton Grange

Disclaimer: The Bridge Connection Inc. Committee wishes to advise that the views or remarks expressed in this publication are not necessarily the views of the volunteer Bridge Connection Inc. editorial or production team and no service or endorsement is implied by the listing of Advertisers, sponsors or contributors. Although every effort is taken in reproducing and printing advertisements correctly, we take no responsibility for errors.

Management Committee

President : **Gloria Pocock**

Secretary: **Regina Bennett** (03) 5425 5402
bridgeconnection.secretary@gmail.com

Treasurer: **Marisa Leahy** 0415 384 217

Magazine: **Regina Bennett - Editor** 0437 514 223

Thank You for Your Service



Farewell and Thanks to Michael "Cowboy" Abramowski

After six years of dedicated service, we bid farewell to our outgoing Chair, Michael "Cowboy" Abramowski, who has left an indelible mark on the Redesdale Recreational Reserve Committee (RRRC).

A respected local farmer, Michael's leadership revitalized our community spaces, notably spearheading the refurbishment of the Pavilion. His tireless efforts also breathed new life into the Redesdale Community Hall (RCH), re-energizing local interest and activities including working with RADA to promote the Anti-Cancer Councils' Big Morning Tea, local Community Meetings with Elected Officials and better use of the RCH for the whole Community.

Michael's vision and passion for community-building extended far beyond individual projects. He understood that strong connections are at the heart of any thriving community, and his work was always centred on bringing people together. Whether through organizing events, fostering partnerships with local groups, or putting forward a long-term maintenance plan, Michael's contributions have ensured that the RRRC will continue to serve as a vibrant hub for Redesdale. His legacy of service and community spirit is something we can all aspire to.

While Michael Abramowski steps down as Chair, we are fortunate that he will continue to contribute his expertise and energy to the RRRC and other community groups. We extend our deepest gratitude for his contributions and look forward to his continued involvement. His legacy will be felt for years to come.

The Bridge Connection - Podiatry Office has had a facelift @Redesdale Hall

Thank you to the RRRC Rada and Bridge Connection Committees for the fabulous transformation of the office space at the Redesdale Hall it looks amazing





The Redesdale Fire Brigade (RFB) is sponsoring an accredited First Aid Training Course for its members, their families and for members of the Redesdale Community.

The course will be conducted by local Paediatric Nurse, Grace Larson, who is a qualified trainer delivering the courses under the CFA approved Registered Training Organisation, Allens Training, on a date to be confirmed in November this year.

A non-accredited CPR training session provided free by Grace earlier this year was very well attended with everyone admitting it was a crucial skill set needed for their family's safety.

The course will cover "CPR" and "Provide First Aid" and will be funded by RFB. Allens Certificates of qualification will be available to successful attendees at a cost of \$20.

RFB considers such training to be of great value to its members and the community and offers this opportunity as a community service.

Please indicate your interest by email or telephone to me or RFB Training Officer, Craig Newton

on **0408 890 060** or email **cpnewton@hotmail.com**

Regards

Geoff Thomas

Secretary

Redesdale Fire Brigade

gtapl@bigpond.net.au

0429 143 490



creative designs for your business

logos menus flyers posters
 invitations brochures magazines
 business cards advertisements
 letterheads with compliment slips
 full business imaging

lyn ingles | graphic designer
 blupen@bigpond.com
 0429 911 980

Proudly Sponsoring Bin Collection
 assistance to the 'Bridge Connection'

For those in the City of Greater Bendigo

First of all – lucky things! Most of us in Redesdale-Mia Mia who are in the Mitchell or Mount Alexander Shire have no bin collection!

There is now a:

WEEKLY collection of your organics bin,

FORTNIGHTLY collection of your recycling bin, and a

FORTNIGHTLY collection of your general waste bin.

Visit www.bendigo.vic.gov.au/waste for information regarding your rostered fortnightly schedule.



SAVE the DATE

162nd
Kyneton
Agricultural
Show



FRI 15 & SAT 16
NOVEMBER 2024



www.kynetonshow.org.au



We can spread any amount that you supply, usually off the ground via industrial loader. We can also get a bulk load and deliver to a number of smaller properties if required.

FERTILISER SPREADING SERVICE



**Contact
for a quote**

No job too small,
no job too big,

Please contact
Carl 0412 144 936
or **David 0427 546 586**

email: carl@glendarling.com.au
119 Darlington Road Baynton VIC 3444

Insure our way, the local way




Our team at Elders insurance Kyneton can look after all your insurance needs and is totally worthy of your trust. Because unlike other insurance providers we actually live and work in your community and take the time to come to you and understand your situation. We can even approve some claims on the spot.

Contact **Melanie Duggan**
for a personalised quote today
03 5423 3007






eldersinsurancekyneton@elders.com.au
83 Edgecombe Road , Kyneton
Elders Insurance Kyneton

Falconer Holdings Pty Ltd atf RJ & SA Falconer Family Trust ABN 27733987494 trading as Elders Insurance Kyneton AFI No. 285618 is an Authorised Representative of Elders Insurance (Underwriting Agency) Pty Limited (ABN 56 138 879 026, AFSL 340965) (EUA), EUA, acting under its own AFSL. It is authorised to distribute Elders Insurance products on behalf of QBE Insurance (Australia) Limited (ABN 78 003 191 035, AFSL 239545), the product issuer. Visit www.eldersinsurance.com.au to consider the Product Disclosure Statement and any applicable Target Market Determination to decide if the product is right for you.



LITTLE FREE LIBRARY

Please 'donate' by simply adding Books, Magazines and DVD's to the cabinet... *Thank you*

Located behind the
Community Notice Board
Inside the Redesdale Recreation Reserve
Redesdale Recreation Reserve,
2631 Kyneton - Redesdale Road
Redesdale Vic 3444

Canine Complementary Therapist

Hello Bridge Connection Readers.

For those who have miss the online versions of our wonderful newsletter, here is a quick recap with excerpts on the past two months of my articles.

In Issue 149 - My Introduction to the region.

"I am the regions Canine Complementary Therapist certified in Canine Myo-Manipulative Functional Therapy (CMFT), Carnivore Nutritionist (HCN) and Canine Conditioning and Fitness that is also a small animal first responder certified in CPR and 1st Aid"

"CMFT is a range of massage techniques that focus on the muscle fibers and fascia to release pain and tension, realign the body, create better flexibility..."

"Canine Conditioning and Fitness incorporates movement. Structured to help the animal use the muscles correctly and re-engage muscles that may have atrophied due to injury or lack of usage. It's a great way to support dogs with orthopedic issues ..."

In Issue 150 - Arthritis and your dog.

"**Osteoarthritis (OA):** OA is a degenerative disease of the joints and affect the whole joint..."

"**Rheumatoid Arthritis (RA):** RA is an autoimmune disease, this where the body's immune system attacks the joints..."

"**Post Trauma Arthritis (PTA):** PTA is caused by trauma to the joint, this can also include muscular injuries which causes instability to the join and its function..."

"**Signs of arthritis:** Lameness, Un-willing to readily partake in usual activities, struggling to get up.... cracking on joints and stiffness, hind limbs not tracking, getting cranky easily ..."

"**Preventing Arthritis:** ... minimize cooked fats and carbs, Keeping the dog fit, of healthy weight and mentally stimulated, ensure the diet is high in balanced omegas 3-6. Addressing any injuries or pain straight away."

The full articles can be found in issues 149 and 150 at: <https://www.redesdale.net/about/the-bridge-connection/> Articles are also posted in my Blog; you can read them and more at www.lollislollies.com.au/blog

Canine Conditioning and Fitness Coaching

As a certified Coach, I teach and support you to guide your dog through simple and fun exercises. We use

tools such as Balance Discs, Ladders, Peanut balls, Cavaletti poles and more!

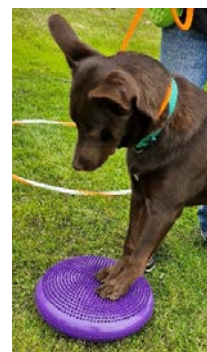
Ideal for seniors, off season training, show dogs, Rehabilitation, younger ones struggling to concentrate and essentially all dogs that have good basic obedience. CCFC also requires Minimal excessive movement for the human and mostly just co-ordination so almost all adults can enjoy these exercises too!

Did you realize that dogs are almost always on auto pilot, so they often react rather than act?

This means that we can influence them to slow down and think about their choices, their bodies and create movement that is more beneficial to their whole body. The anatomical component is called Proprioception (sensory system and motor control), the training methods used positively affect cognitive function.

Auto pilot increases muscle atrophy in the lesser used muscles, many of those muscles are smaller highly important structural muscles related to joints such as Elbows, Hips and Vertebra.

Similar to Physiotherapy, Conditioning is a fun and gentle way to increase exercise into your dogs' life. It has many proven benefits for dogs and animals with Arthritis, management of skeletal issues, decreases recover times and post injury, and helps prevent injury. A number of the exercises are based around Instability training. Unstable surfaces in a controlled setting the dog will re-engage smaller muscles and underused will work hard to maintain balance and therefore strengthen.



Keep an eye out for the dogs at the reserve on most Thursday afternoons enjoying sessions! Contact me on 0431 221 604 if you would like to book or express your interest. And a huge thank to Barb and Halo for letting me use their photos.

Big pats for all your pets

Chevelle Williams, CMFT, HCN, CCFC, DipCanCom, DipMBSR



Rocklands

Open Garden

Redesdale

Sat 19 - Sun 20 October

Open 10.00am - 4.30pm

632 North Redesdale Rd, Redesdale Vic 3444

This is a peaceful, rambling garden with deep, colourful perennial beds, an abundance of roses and wonderful views of the Campaspe River.

Entry \$10 Students \$6 U18 free via Trybooking
<https://www.trybooking.com/CPPHD>

opengardensvictoria.org.au



Coliban Springs

Open Garden

Redesdale

Sat 19 - Sun 20 October

Open 10.00am - 4.30pm

866 Coliban Park Rd, Redesdale Vic 3444

An amazing mature garden full of native plants, undulating paths and quiet areas to sit and enjoy the surrounds.

Entry \$10 Students \$6 U18 free via Trybooking
<https://www.trybooking.com/CPOOZ>

opengardensvictoria.org.au



Gibbards Crossing

Open Garden

Redesdale

Sat 19 - Sun 20 October

Open 10.00am - 4.30pm

46 Gibbards Lane, Redesdale Vic 3444

A tranquil garden with individual areas of mass plantings encased by sedimentary stacked walls and a monticule with stunning views over Redesdale.

Entry \$10 Students \$6 U18 free via Trybooking
<https://www.trybooking.com/CPPEF>

opengardensvictoria.org.au



Redesdale website refresh

"Got friends coming up and need to find them somewhere to stay?"

Got a weekend free and looking for something to do locally?

- Need to get in contact with the Council (there are 3 in our area!)?
- Trying to find an old copy of the Bridge Connection, but fear you may have thrown it out?
- Want to rent the Hall or the Pavilion?
- Want to attend those yoga classes but can't remember when or where?
- Most importantly, do you know where to find the community defibrillator?

Look no more! The Redesdale website

<https://www.redesdale.net> has just been refreshed. You can find the answer to these and many more questions online: faster, simpler and all from your favourite digital device.

We'll be using the Calendar to let you know when community events are happening: one off's as well as regulars. Stay tuned for Christmas (yes, it's only a few months away!) and our Summer BBQ series, both in the Reserve.

We're always looking to improve how we communicate with our community and our visitors. Let us know what else could be on the website to make it even more useful or user-friendly.

SUPPORT YOUR ADVERTISERS

'THE BRIDGE CONNECTION COMMUNITY NEWSPAPER'

...is **supported** by **local businesses**

and it is important, in return

for the community to **support them**.

For rural regions to succeed in business they need the 'locals' to keep them viable by conducting business in our township. So! next time you need something for a job that you are working on... look to the

'Bridge Connection' and give

a **LOCAL BUSINESS** a try.

**BUY LOCAL
WHERE YOU
ARE ABLE TO.**

**SUPPORT THE TOWN THAT
SUPPORTS YOU... THANK YOU!**



To advertise in the **'Bridge Connection'** please contact the Editor

Regina Bennett on: **0437 514 223** OR email **bridgeconnection.editor@gmail.com**

creative designs for your business

logos menus flyers posters
invitations brochures magazines
business cards advertisements
letterheads with compliment slips
full business imaging

lyn ingles | graphic designer
blupen@bigpond.com
0429 911 980

Proudly Sponsoring assistance to the **'Bridge Connection'**



Need to advertise your **business locally?**

Support the

'Bridge Connection'

it is a great way to let the community know you are **open for business**.

For more information turn to **page 3** for advertising rates or for more information phone

Editor - **Regina Bennett 5425 5402**

'Bridge Connection' Community Newspaper

Annabelle
CLEELAND MP
 Proudly supporting the
Redesdale Community
 🌐 Annabellecleeland.com.au
 📍 25 Bridge St E, Benalla
 📞 Annabelle4Euroa 📞 03 5762 1600
 📧 Annabelle.cleeland@parliament.vic.gov.au *Member for Euroa*



2.96 for children aged 9-12 (state average 1.51). Among adults, the average number of missing teeth due to dental decay is also higher.

Additionally, community members have limited access to paid dental services and must travel approximately 50 kilometres for appointments.

“Delayed treatment leads to a whole range of adverse health outcomes and entrenched health disadvantages for kids growing up in towns like Heathcote, and this needs to be addressed absolutely immediately,” Ms Cleeland said.

“For the sake of children in the region, addressing the dental health of all students in Heathcote is something that must be looked at immediately by this government.”

Dental programs needed for local youth

As Heathcote and surrounding towns continue to fall behind the rest of the state when it comes to oral health, The Nationals’ Member for Euroa, Annabelle Cleeland, has called for government dental health initiatives to be extended to all local students.

Programs like Smile Squad currently offer free oral health promotion, dental check-ups, and treatment to Victorian government school students, but it is not expected to be rolled out in low-fee Catholic and Independent schools until at least 2026.

Ms Cleeland recently wrote to the Minister for Health asking that this program be extended into non-government schools in Heathcote as a matter of priority.

“As things stand, this free program is only accessible to students at government schools, despite towns like Heathcote having significantly worse dental health outcomes than the rest of the state,” Ms Cleeland said.

“Heathcote’s non-government schools are not privileged private schools like those in Melbourne, with Holy Rosary having 74 percent of students in the lower quartiles.

“While Heathcote and parts of surrounding towns like Mia Mia and Redesdale remaining without fluoridated water and the Allan Labor Government refuses to address this, Smile Squad will be of particular benefit to health of local children.”

According to Dental Health Services Victoria, the average number of decayed, missing or filled teeth for children in Heathcote was 2.08 among children aged 0-5 (state average: 1.21), 3.00 for children aged 6-8 (state average 2.35), and

ADVERTISEMENT

Lisa
Chesters MP
 FEDERAL MEMBER
 FOR **BENDIGO**



📞 5443 9055
 🌐 lisachesters.org

Authorised by Lisa Chesters, ALP,
 16 Myers St, Bendigo

Labor 

The Albanese Labor Government is building on its significant investments to prevent family, domestic and sexual violence against women and children, and support those who experience it.

Following National Cabinet today, the Commonwealth Government has made \$4.4 billion in further commitments to deliver a new National Access to Justice Partnership and progress our shared goals under the National Plan to End Violence against Women and Children 2022-2032.

The funding boost builds on the \$3.4 billion of investments, and 85 funded initiatives, made since 2022.

Investments following National Cabinet include:

Invest \$351 million over five years from 2025-26 for funding under a renewed, five year National Partnership Agreement on Family, Domestic and Sexual Violence Responses frontline services, to be matched by states and territories;

Enhance and expand child-centric trauma-informed supports for children and young people who have witnessed or experienced family, domestic and sexual

violence through investment of \$80 million across a range of programs and initiatives; and Lead the development of national, evidence-based standards for men's behaviour change programs.

The funding under a renewed, five year National Partnership Agreement on Family, Domestic and Sexual Violence Responses frontline services will drive progress on Commonwealth, state and territory actions under both of the Action Plans that underpin the National Plan, and also respond to recommendations relating to front-line service delivery from the Rapid Review of Prevention Approaches.

Funding will be directed to specialist services for women, services designed to break the intergenerational transmission of violence and programs that work with men – including men's behaviour change.

Ensuring children who witness and experience family, domestic and sexual violence are appropriately supported, the Government will deliver an \$80 million package including:

A comprehensive consultation process to inform the design and implementation of new and revised initiatives to support children and young people, including a specific focus on First Nations children and young people;

Expansion of components of the Specialised Family Violence Service to bolster child-centric and culturally safe services;

Funding to specialist and community support services, including Aboriginal Controlled-Community Organisations and rural and regional services, to expand social, therapeutic, legal and other support services provided to victims and survivors of child sexual abuse and children at risk of or engaging in harmful sexual behaviour;

Funding to expand and extend funding to Aboriginal Controlled-Community Organisations to provide culturally safe child-centred support available to First Nations children and young people and their families under Specialised Family Violence Services; and

Funding to expand the Supporting Children After Separation Program to provide specialised, longer-term support for children of separated families who are already engaged in counselling support, to avoid needing to transfer those cases to a Specialised Family Violence Service.

The Government will also develop of national, evidence-based standards for men's behaviour change programs and associated implementation mechanisms to ensure these interventions meet consistent best practice requirements.

The national standards will help ensure the existing service system which works with men who are using or at risk of using violence can have more success in their programs.

Minister for Social Services Amanda Rishworth said the Government was focused on working towards the shared goal with states and territories to end violence against women and children in one generation.

"The safety of women and children experiencing family, domestic and sexual violence is a national priority for our Government and it has been something we have consistently worked on since we were elected," Minister Rishworth said.

"We know we cannot address this issue alone – it requires all governments, Commonwealth, state and territory – to work together along with businesses, communities and individuals.

"We all have a role to play, and these additional investments are about continuing to build on our significant efforts to date."

Assistant Minister for the Prevention of Family Violence Justine Elliot said the Albanese Government continues to place women's safety at the forefront of the national agenda.

"Our commitment to the change that is needed takes serious action, investment and coordination across the country," Assistant Minister Elliot said.

"Today is another example of listening to the voices of lived-experience, frontline workers and experts to deliver a critical package of funding that further bolsters our record investment."

If you or someone you know is experiencing, or at risk of experiencing, domestic, family or sexual violence, call **1800RESPECT** on **1800 737 732**, chat online via **www.1800RESPECT.org.au**, or text **0458 737 732**.

If you are concerned about your behaviour or use of violence, you can contact the Men's Referral Service on **1300 766 491** or visit **http://www.ntv.org.au**.

Feeling worried or no good? No shame, no judgement, safe place to yarn. Speak to a 13YARN Crisis Supporter, call **13 92 76**. This service is available 24 hours a day, 7 days a week.

Redesdale 55.60mm Year to date 378.20mm

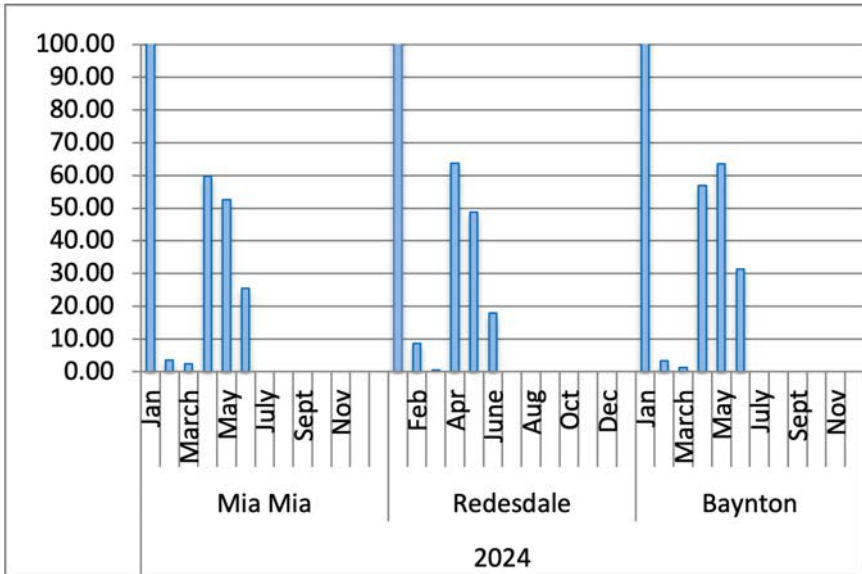
Mia Mia 53.75mm Year to date 399.50mm

Baynton 75.20mm Year to date 440.40mm

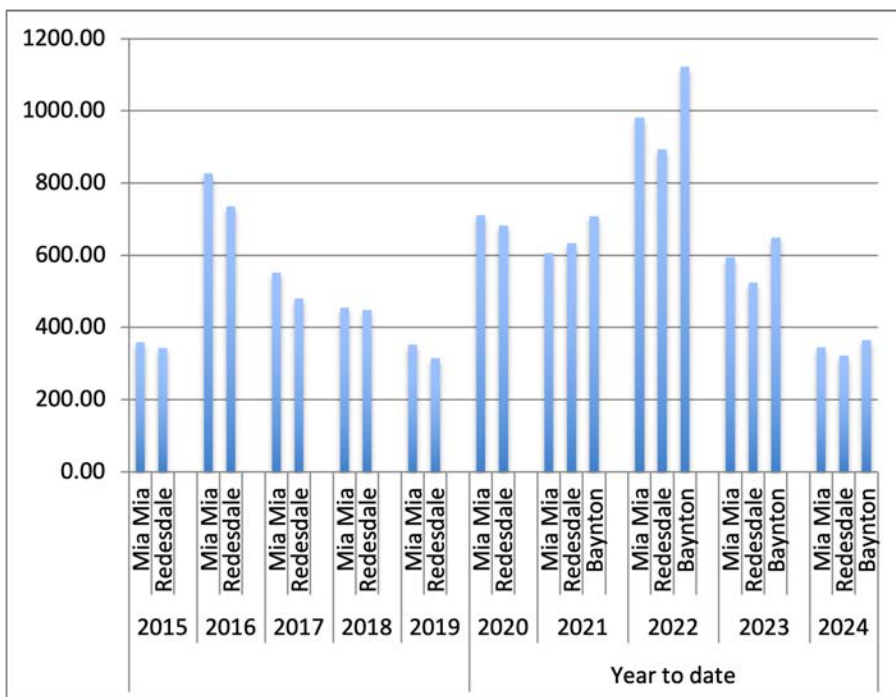
The average yearly rainfall for **Redesdale** is about 601mms.

Thank you to **Helen Bennett** for the Mia Mia readings & **Belinda Ryan** for Baynton readings

Year Totals for Previous Years



2017	Mia Mia	551.75
	Redesdale	479.60
2018	Mia Mia	455.00
	Redesdale	448.40
2019	Mia Mia	352.00
	Redesdale	315.00
2020	Mia Mia	711.25
	Redesdale	682.85
	Baynton	707.80
2021	Mia Mia	593.50
	Redesdale	634.40
	Baynton	1122.30
2022	Mia Mia	981.50
	Redesdale	894.00
	Baynton	1122.30
2023	Mia Mia	593.90
	Redesdale	524.40
	Baynton	648.40





Redesdale & Surrounds Comming Events

September

Thur 5th- Sun 19th 15th
Kyneton Daffodil & Arts Festival
Sat 28th AFL Grand final day

October

Sat 5th Podiatrist
Sat- Sun 19th 20th
local open gardens
Sat 26th Sisterhood project paint and Sip page 8.

November

Sat 2nd Podiatrist
Tue 5th Nov
Melbourne Cup day

for more information - redesdale.net

- <https://www.heathcote.org.au-kyneton.org.au>
- <https://www.bendigoregion.com.au>
- <https://www.bendigoregion.com.au/visit-castlemaine-maldon>

Ballan	Local Farmers and Makers Market. 2nd Saturday of every month.	9.00 - 1.00pm
Castlemaine.	Local Farmers Market. 1st Sunday of every month.	9.00 - 1.00pm
CFM.	Weekly Market, Wednesday.	2.30 - 5.30pm
Clunes.	Local Farmers Market 2nd Sunday each month.	8.30 - 1.00pm
Creswick.	Local Farmers Market 3rd Saturday every month.	9.00 - 1.00pm
Daylesford.	Local Market. Every Sunday.	8.00 - 3.00pm
Gisborne.	Olde Time Market. 1st Sunday every month.	9.00. - 2.00pm
Kyneton.	Local Farmers Market. 2nd Saturday every month.	8.30 - 1.00pm
Lancefield.	Local Farmers Market. 4th Saturday every month.	9.00 - 1.00pm
Maldon.	Local Farmers Market. 2nd Sunday every month.	
Malmsbury.	Local Farmers Market. 3rd Sunday every month.	9.00 - 1.00pm
Talbot.	Local Farmers Market. 3rd Sunday every month.	9.00 - 1.00pm
Trentham.	Local Farmers Market. 3rd Saturday every month.	9.00 - 1.00pm
Woodend.	Local Farmers Market 1st Saturday every month.	9.00 - 1.00 pm

ONE STEP PODIATRY

**REDESDALE'S LOCAL
PODIATRIST**

Where?
**REDESDALE COMMUNITY
HALL**

When?
FIRST SATURDAY MONTHLY

How?
**BOOKINGS ESSENTIAL:
0430 730 615**

REDESDALE COMMUNITY HALL & PAVILION AVAILABLE FOR HIRE

Redesdale gives you a choice of venues for your next party, meeting or event:

Redesdale Hall: 160 sqm floor space with stage and expansive catering kitchen, as well as on-site restrooms.

Redesdale Pavilion: 108 sqm floor space with panoramic windows overlooking the Redesdale Reserve Oval.

Either of these wonderful facilities are available for community events (1) or public use (2).

- (1) Community - Use of facility targeting community benefit.
Entrance/participation fees are not charged by organiser.
- (2) Retail - Use of facility for private or business use.
Entrance/participation fees may be charged by organiser.

Equipment Rental Check out the extensive furniture & equipment below to help you hold your event at home

Item:	Available	Item:	Available
Commercial sized steel roaster	1	4 burner BBQ	1
Marquee (Large), 6m x 12m	1	Table cloths, white	10
Marquee (Small), 3m x 3m	1	Chairs, green steel	80
Tables, plastic, 1.8m x 1m	10	Chairs, white plastic	80
Tables, wood, 1.8m x 1m	20	Umbrellas, charcoal	10

For all inspections and enquiries contact Redesdale Recreational Reserve Committee:

E: 3444reserve@gmail.com

M: 0408 890 060



THE REDESDALE HOTEL

Central Victoria's Favorite Country Pub

For bookings please call (03) 4405 0601

Wednesday & Thursday 12pm – 9pm Lunch & Dinner

Friday – Sunday 12pm – Late Lunch & Dinner

PUBLIC HOLIDAYS – Phone for details

Kitchen closes at 8pm everyday

The Redesdale Hotel

2640 Heathcote - Kyneton Road

Redesdale Vic 3444

info@theredesdalehotel.com.au



The Redesdale Hotel

[redesdalehotel](https://www.facebook.com/redesdalehotel)



www.theredesdalehotel.com.au

creative designs for your business

Proudly Sponsoring
assistance to the 'Bridge Connection'

logos menus flyers posters
invitations brochures magazines
business cards advertisements
letterheads with compliment slips
full business imaging

lyn ingles | graphic designer
blupen@bigpond.com
0429 911 980

Quality supplier and installer of:

- Farm Sheds - Work Shops
- Hay Sheds - Garages/Barns
- Quality RHS Frames
- All Australian Steel
- Shed Materials - purlins/ sheeting also available

Been Building sheds in Central Victoria for over 40 years

Come and visit us at 12 Bourke St Kyneton
Mon- Fri 8 am to 4.30 pm, other times by appointment
[03 5422 6644](tel:0354226644) or info@cvsheds.com.au www.cvsheds.com.au

RECIPE OF THE MONTH

Potato Gnocchi

87



- 1kg of floury potatoes (red skin Desiree)
- 300-400g 00 flour
- 2 tablespoons of salt for cooking the potatoes
- 1 egg
- 1 quantity of tomato Sugo
- 2 tpls salt for cooking the gnocchi
- Grated parmesan

Place the potatoes into a large pot and cover with water, add salt and bring to a boil and cook until tender.

Remove the potatoes from the pot and let them stand for 5 mins to dry out a little and also to cool down.

Remove the skins and the pass them through a ricer. Place the flour on a flat surface making a small mound, then place the potatoes beside the flour.

Add the egg and mix together to form a soft dough, it should not stick to your fingers.

On a lightly floured surface, cut small amounts of dough to form ropes. Cut into 2 cm pieces, then slide each piece on the back of a fork or use a wooden paddle. (This helps the sauce to stick to them).

Heat the sauce.

Cook the gnocchi in a large pot of boiling, salted water.

When they float to the top, remove with a slotted spoon and add them to the sauce.

Serve with grated parmesan.

Marisa Leahy

Veterinary Surgeon

Mobile: Metcalfe: Malmesbury: Mia Mia



Small animal
veterinary
work by
appointment

Dr Julie Kendall m: 0447 573 247

e: metcalfe.vet@gmail.com

Turn your house
into a home 
with Tucks
locally made products



Quality



& Style

- Aluminium and Timber Windows
- Window Replacements • Security Doors
- Shower Screens • Wardrobe Doors

We are in your area regularly
and offer a **FREE** measure
and quote service.

We can offer supply and install prices.



**Tucks
Windows
BENDIGO**

Celebrating 43 Years
providing top quality
products and
professional
friendly service.

P: 03 5446 8855

E: quotes@tuckswindows.com.au

www.tuckswindows.com.au

UNITING CHURCH

Morning Tea is shared 15minutes before each service



**Minister Munchies is on Wednesday
and starts at 10am.**

For more information go to

www.macedonrangesunitingchurch.org.au

CATHOLIC CHURCH

Redesdale 2nd Sunday of each month 11am

You are warmly invited to

BARFOLD

COMMUNITY
CHURCH

10.00 am each Sunday

followed by morning tea

1691 Kyneton-Heathcote Rd, Barfold

Contact: Grant 0484 935 012

or John 0428 234 164



Redesdale

**Redesdale Yoga is back
for 2024!!!!**

So, come and join our local yoga teacher – Tania – on
Wednesdays and/or **Saturdays** to discover the many
physical and mental benefits of yoga.

No prior experience or minimum fitness level is required.
Just bring a mat, hand towel and water, wearing
comfortable clothing.

Redesdale Reserve Community Pavilion

Wednesdays 5:30pm – 6:30pm

Saturdays 9:00am – 10:30am



For space availability and prices contact
E: glendenecottage@gmail.com
M: 0403 659 741

REDESDALE MIA MIA
PRIMARY SCHOOL PRESENTS

REDESDALE MIA-MIA PLAY GROUP

TUESDAYS
9:15 AM - 11

FUN SOCIAL GATHERING FOR LOCAL FAMILIES.

All parents, young children and babies welcome.
Redesdale MM Playgroup is registered with
Playgroup Victoria.

Held weekly at Redesdale Mia Mia Primary School.

For more info email:
redesdalemiamiaplaygroup@gmail.com



September Kitchen Garden Action

Plant or sow in Spring



PS - Plant Seedling

SD - Sow Direct

ST - Seedling Tray

Amaranth
GLOBE Artichokes – plant crowns
Asian Greens e.g. Bok Choy
Basil- PS for the next 2 months
Beetroot - PS or SD
Broad beans – sow direct (SD)
Broccoli – SD or Plant Seedlings (PS)
Cabbage – PS
Capsicum- ST/PS under cover
Carrot -SD
Cauliflower -= SD/PS
Celery – SD/PS
Celtuce -PS
Celeriac –SD/PS
Celtuce – SD/PS
Chervil – SD/PS
Chicory
Chines Cabbage
Chilli -SD/PS
Chives -SD
Coriander – SD or PS
Cucumber – PS undercover
Cress
Dill - SD
Eggplant – PS undercover
Endive - PS
Fennel
Jerusalem Artichoke
Kale - ST

Kohlrabi – SD or PS
Leek -SD
Lettuce – SD
Loofah -SD for your own biodegradable sponges
Grow up on a support
Mediterranean herbs
Melons – PS undercover
Mustards - SD
Onion – SD or PS
Parsley – SD or PS
Parsnips - SD
Peas – SD soak overnight
Potatoes – SD
Pumpkin – PS undercover
Radish – SD
Rocket - SD
Rhubarb - plant crowns
Salsify
Silverbeet – SD/PS
Snow Peas – SD soak overnight
Spinach SD/PS
Spring Onions- SD
Sweet Corn = SD
Swedes – SD
Turnips – SD
Tomato seeds should have been planted out last month, Companions for tomato - basil, asparagus, beans, beets, cabbage, chilli, capsicums, eggplant, marigolds, potatoes
Zucchini: start planting seeds in pellets in seed raising mix for planting out in spring. Sit in a warm spot and keep moist. Feed weekly with half strength fertiliser. Protect from cold/frost. Plant out in November grow your seedlings in a warm protected spot until time to plant them out. Hold off mulching
Last chance to remove gall wasp from citrus trees and to control peach leaf curl feed passionfruit and give a light trim.
Dig green manure crops back into the soil
Check for aphids on roses and veg
It is not too late to plant bare rooted ornamentals e.g. Crab apples, roses and lilacs.
Plant a carpet of flowering natives e.g.; paper daisies, yellow buttons, and everlasting daisies
Keep picking Sweet Pea flowers to promote continual blooms.

Happy Spring planting in your Kitchen garden



Paint & Sip



Join us for this fundraising event where you will sip on wine from Double Oaks Estate and paint wildflowers sourced locally

All Supplies, Food & Drinks Included

\$100 per person

Saturday, October 26th

7 pm to 9pm

The Old Auction House Kyneton



WILDPLAY CO

BUSH KINDY

COMING TO REDESDALE IN TERM 4

REGISTER YOUR INTEREST





RayWhite

Let us Bridge the gap in your selling needs!

Contact Ray White Kyneton for your property appraisal today.

Phone: 5422 2127

Ray White Kyneton
2 High St, Kyneton VIC 3444
E: reception.kyneton@raywhite.com



9th



**ON-PROPERTY
RAM SALE**

Wednesday 25th September 2024

Inspection: 10.30am
WHITE Suffolk Auction 12.30pm
Merino Helmsman to follow
LUNCH PROVIDED

**KOOLE VALE
MERINOS**

28 PARFREY ROAD,
COSTERFIELD
(See map on back page)
SELLING AGENTS



Adam Millard 0400 499 064
Chris Anderson 0408 921 540
3% REBATE TO OUTSIDE AGENTS

**40 Merino & Poll
Merino Rams**

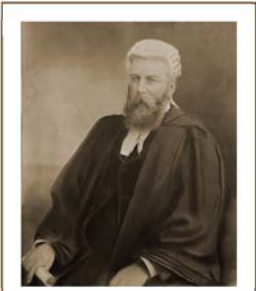
**32 White
Suffolk Rams**

Palmer Stevens & Rennick
Barristers & Solicitors *Founded 1852*



provide advice to clients all over Australia.

- Powers of Attorney
- Wills and Estates
- Criminal Law
- Conveyancing
- Property Law
- Family Law
- Agribusiness Law
- Commercial Litigation
- Traffic Law and Toll Fines
- Appearing in all Courts
- Pre purchase advice for large Agribusiness Assets
- Compensation for Government Acquisitions



Mr Joseph Palmer
Founder of
Palmer Stevens & Rennick

8 Jennings Street, Kyneton
or P.O. Box 1, Kyneton Vic 3444
Phone: (03) 5422 6500 Fax: (03) 5422 3385
Email: psr@psr.net.au

A good life
deserves the
best farewell

**WILLIAM
FARMER**
FUNERAL DIRECTORS

151 McCrae Street Bendigo
12 Victoria Street Eaglehawk
P: 5441 5577
www.williamfarmer.com.au

A tradition that continues...