



ISSUE NO: 147 May 2024

For the Mia Mia- Redesdale Region including:

- Heathcote • Derrinal • Glenhope • Baynton • Sidonia • Barfold
- Langley V Sutton Grange • Elphinstone • Kyneton • Metcalfe

# BRIDGE CONNECTION COMMUNITY NEWSPAPER



<https://www.facebook.com/groups/897527781461431/>

## Grace Larson of Mia Mia

# winner

### receives the AgriFutures Rural Women's Award



COVER CONCEPT COURTESY/blue pencil publishing

Photo credit: Melissa Hobbs Photography

# CONGRATULATIONS

Turn to page 4 for full details

L-R: Mandy Hehir (Westpac), Michaela Settle (Parliamentary Secretary for Regional Development and Agriculture), Grace Larson (VIC winner), Sheridan Ingold (AgriFutures).

In March, Grace Larson became the winner of the **2024 Victorian AgriFutures Rural Women's Award**. She was awarded this for her extensive work to address the unfair health disadvantages faced by rural children. The **AgriFutures Rural Women's Award**, supported by platinum sponsor Westpac.





# Call someone who gets it.

Every year we help thousands of people control their gambling. So, we get that every story is different.

To change the way you think about gambling, call **Anglicare Victoria** on **1800 244 323**.

Scan for language options.



## Editorial

Have you noticed how much rubbish is being deposited on our roadsides? On June 1st there will be a "Clean up Redesdale Day" (Page 13). Lets hope loads of people turn up.

We are so lucky to have enthusiastic and energetic young people coming to live amongst us all. Congratulations to Grace Larson from all at Bridge Connection. It would be great if we had a community network of responders using the GoodSam app (see page 5).

This year we will be producing our 150th edition and we would be pleased to hear suggestions for how we could celebrate this milestone.

And don't forget "The Biggest Morning Tea" at the Redesdale Hall on Thursday May 23rd! (Page 11). Stay warm!



Stay warm!

Regina Bennett

**Editor:** Regina Bennett

**Ph:** 0437514223

**e:** [bridgeconnection.editor@gmail.com](mailto:bridgeconnection.editor@gmail.com)

## Bridge Connection

### - Mission Statement -

The mission of **Bridge Connection** is to bring people together by:

1. Providing information about local issues, goals and events, and to celebrate local achievements,
2. Encouraging economic growth in the area
3. Fostering geographic identity, and
4. Providing a platform for public debate

Bridge Connection is published by local people who volunteer, for local people as a **free paper** and on line at **redesdale.net** and via **face-book**



<http://www.facebook.com/groups/897527781461431/>

Keep in touch with us and what's happening in our community.



[www.redesdale.net](http://www.redesdale.net)



Redesdale & District Association



[redesdale\\_vic](https://www.instagram.com/redesdale_vic)



## BRIDGE CONNECTION COMMUNITY NEWSPAPER

### Advertising Rates/Sizes

Size	Height x Width	Price per issue	10 Editions
Business Card	55mm x 90mm	\$25	\$250
Quarter Page	130mm x 90mm	\$50	\$500
Half Page	130mm x 190mm	\$95	\$950
Full Page	270mm x 190mm	\$175	\$1,750

**Colour Advertisements plus 20%.**

**Please Note:  
COPY DEADLINES  
17th OF EACH MONTH**

Please send editorial or advertising copy to:  
**bridgeconnection.editor@gmail.com**  
or by post to **Regina Bennett 3465 Burke & Wills track Mia Mia 3444.**  
For other editorial enquiries, please phone **0437 514 223**

### Bridge Connection Distribution

950 Copies printed and distributed to Redesdale Mia Mia Region, including Barfold, Baynton, Derrinal, Elphinstone, Glenhope, Kyneton, Langley, Metcalf, Sidonia and Sutton Grange

**Disclaimer:** The Bridge Connection Inc. Committee wishes to advise that the views or remarks expressed in this publication are not necessarily the views of the volunteer Bridge Connection Inc. editorial or production team and no service or endorsement is implied by the listing of Advertisers, sponsors or contributors. Although every effort is taken in reproducing and printing advertisements correctly, we take no responsibility for errors.

### Management Committee

President : **Gloria Pocock**

Secretary: **Regina Bennett** (03) 5425 5402  
[bridgeconnection.secretary@gmail.com](mailto:bridgeconnection.secretary@gmail.com)

Treasurer: **Marisa Leahy** 0415 384 217

Magazine: **Regina Bennett - Editor** 0437 514 223

# Grace Larson of Mia Mia receives the AgriFutures Rural Women's Award

We are so lucky to have amazing new families moving to our community. There are so many young people with energy, enthusiasm and great ideas. It was terrific to watch many new people meeting each other at the recent events held over summer at the Redesdale pavilion.

Amongst them was Grace Larson from Mia Mia and her delightful family. In March, Grace became the winner of the 2024 Victorian AgriFutures Rural Women's Award. She was awarded this for her extensive work to address the unfair health disadvantages faced by rural children.

The AgriFutures Rural Women's Award, supported by platinum sponsor Westpac, is Australia's leading Award in acknowledging and supporting the critical role women play in rural and regional businesses, industries and communities. It is an opportunity to celebrate the forward-thinking, courageous leaders who come from industries that represent some of the most vast and remote areas of Victoria.

At the ceremony, Grace received a \$15,000 grant from Westpac to further support her project as well as the opportunity to undertake a professional development course of her choosing. She will go on to represent Victoria at the AgriFutures Rural Women's Award Gala Dinner and National Announcement in Canberra later in the year, where the National Winner will be awarded an additional \$20,000 Westpac grant and the National Runner Up, an additional \$15,000.

Grace is a dedicated children's nurse with more than 17 years experience and she is empowering local parents and caregivers across rural Australia to identify preventable illness and decrease the need for rural children to seek specialised services in urban areas.

"I've teamed up with my sister to deliver The Sisterhood Project, a nonprofit initiative that addresses the unfair disadvantages faced by rural children, which aims to break down barriers hindering parents and caregivers from accessing vital training when it comes to illness recognition, accident prevention and basic first aid," she said.

"I'm so thrilled to receive this award, so that I can continue to deliver on my vision that everyone should have access to the best healthcare no matter where they live."

Parliamentary Secretary for Agriculture Michaela Settle said: "When we empower visionary rural women our

whole rural community benefits. We are so proud of our Victorian winner and we wish Grace the best of luck in taking out the national prize later this year in Canberra."

AgriFutures Australia Managing Director John Harvey said women like Grace are not only having a real impact on their communities today, but are laying the foundations to inspire other young, determined and forward-thinking female leaders working in rural, regional and remote communities.

"The AgriFutures Rural Women's Award provides these women with a critical platform to bring to life game-changing, inspiring and impactful change across rural and regional Australia," Mr Harvey said.

"This Award acknowledges the future-shaping work these women are carrying out in their communities, and importantly, provides them with the support and leadership skills to keep building towards a stronger regional Australia."

## *Kathy Hall*



***Robyn Abramowski***  
***at CPR free training Redesdale***  
**instructed by Grace Larson**

## Increasing the chance of survival for people in the bush

There is no doubt that the serenity of living in a rural environment comes with many advantages, the quietness, the fresh air, the connection to a smaller community of neighbours that roll up their sleeves and help out when you need a hand. But as country folk, we are also aware that there are inherent disadvantages to our place of residence, such as increased risk of bushfire and prolonged access to emergency response in the event of an accident or natural disaster.

For people who live in rural Australia we are 50% less likely to survive a cardiac arrest due to our isolation and the reduced number of people who can provide immediate CPR and place an AED in the event of this type of incident. For every minute a person doesn't receive CPR and the placement of an AED for defibrillation their chance of survival decreases by 10%. These are sobering statistics that are easily pushed to the back of our mind when we are robust and healthy people with little health concerns, but the reality is that anyone of any age or level of health may suffer a cardiac arrest.

However, I don't believe that the challenge of decreasing survival rates for people in the bush is an insurmountable one, the same things that make living in a small community wonderful can be our saving grace. Imagine a community in which the majority of adults are willing and able to perform CPR and bring an AED to a neighbour when they are in trouble. Just recently the communities in Redesdale and Mia Mia came together and practiced performing CPR on babies, children and adults and many signed up with the GoodSAM responder app - This app gives notifications to your mobile phone when someone in your local community has called 000 and needs assistance with CPR. As a community we are going to get to our neighbours places 30-40 minutes before any ambulance response will and in doing so we will drastically improve the survival outcomes for our neighbours and community.



Thank you to all the community members who downloaded the app and signed up to be a local GoodSAM responder for your community. Anyone can download the GoodSAM app you just need to be willing and able to perform CPR and use an AED. **Our local AED can be found at the CFA in Redesdale on the right hand side of the building.**

We also raised awareness for the Emergency Plus app for individuals to have on their phone as an alternative to contacting emergency services such as Ambulance, SES and police. The app uses GPS functionality built into smart phones to help a triple zero (000) caller provide critical location details to mobilize emergency services.

So the answer is in our connection to each other, how we show up for one another when we are in dire need, imagine if it was you performing CPR on your loved one and your neighbour walks in the door to give you a hand while you wait for the ambulance to arrive. Then we can change the outcomes for our rural pocket of Victoria and know that if anyone needs CPR in our community they will have a much better chance than just 50/50 to survive that event.

Thanks! Grace

***Grace Larson is a paediatric intensive care nurse with 20 years experience in the ICU. She teaches accredited CPR and first aid in the community with the company PAEDS education and Advanced Life Support to health professionals across Australia. She also is the Co founder of The Sisterhood Project a not for profit getting lifesaving skills to disadvantaged parents in the bush. She lives in Mia Mia with her husband Steve and 3 kids.***



***Above and left  
CPR free training Redesdale  
instructed by Grace Larson***

# Made for more purpose



At Victoria Police, you will enjoy a purposeful career making a real difference in your community. With more benefits including a generous starting salary, 9 weeks paid leave, and access to ongoing training and support. Start your career with Victoria Police today.



**MADE  
FOR  
MORE**

Authorised by the Victorian Government, 1 Treasury Place, Melbourne

## Insure our way, the local way



Our team at Elders insurance Kyneton can look after all your insurance needs and is totally worthy of your trust. Because unlike other insurance providers we actually live and work in your community and take the time to come to you and understand your situation. We can even approve some claims on the spot.

Contact **Melanie Duggan**  
for a personalised quote today  
**03 5423 3007**



eldersinsurancekyneton@elders.com.au  
83 Edgecombe Road , Kyneton  
Elders Insurance Kyneton

Falconer Holdings Pty Ltd aff RJ & SA Falconer Family Trust ABN 27733987494 trading as Elders Insurance Kyneton AFI No. 285618 is an Authorised Representative of Elders Insurance (Underwriting Agency) Pty Limited (ABN 56 138 879 026, AFSL 340965) (EUA), EUA, acting under its own AFSL. is authorised to distribute Elders Insurance products on behalf of QBE Insurance (Australia) Limited (ABN 78 003 191 035, AFSL 239545), the product issuer. Visit www.eldersinsurance.com.au to consider the Product Disclosure Statement and any applicable Target Market Determination to decide if the product is right for you.

# LITTLE FREE LIBRARY

want to know more?  
visit  
[redesdale.net](http://redesdale.net)

FREE LIBRARY

Please 'donate' by simply adding Books, Magazines and DVD's to the cabinet... *Thank you*

Located behind the  
Community Notice Board  
Inside the Redesdale Recreation Reserve  
**Redesdale Recreation Reserve,**  
2631 Kyneton - Redesdale Road  
Redesdale Vic 3444

# Music at Mia Mia

It was great to gather at the lovely Mia Mia Hall again to hear live music.

We were treated to Mariah McCarthy, Matt Katsis, Maddie O'Connor and Rhyley McGrath. In the usual way at Mia Mia, there was great hospitality and delicious food.

What a terrific way to meet up with friends in that lovely autumn setting.

The music event was part of the "Town Hall Tour" of small rural towns which aims to perform live folk and blues music to small communities and combine this with family friendly barbecue fundraisers. What a great idea! If you would like more information,

go to; [rhyleymcgrath.com.au/townhall\\_tour](http://rhyleymcgrath.com.au/townhall_tour)



**Matt Katsis**



**Maddie O'Connor and Rhyley McGrath**



**OPEN DAY**  
**MONDAY 13TH**  
**MAY 9 – 11AM**

**REDESDALE MIA MIA PRIMARY SCHOOL**  
**ENROLMENTS**  
**OPEN NOW!**



**NURTURE YOUR CHILD'S POTENTIAL IN A CARING COMMUNITY**

Imagine a school where everyone knows your name, teachers go the extra mile, and your child thrives in a supportive environment. That's what you'll find at our small country school.

**Here is what sets us apart**



- Small class sizes: Individual attention for every student.
- Strong academics: Rigorous curriculum that fosters a love of learning.
- Family atmosphere: Welcoming community where students feel at home.
- Holistic approach: Programs that support your child's mental and emotional wellbeing.
- Rich musical program: Develop musical talent and appreciation for the arts
- Diverse learning: Including Indonesian language classes, STEM and Sustainability Program focusing on our local environment and specialist programs in sport and art.

Visit our website or contact us today to learn more!

**REGISTER FOR A TOUR NOW**

**CONTACT:**

03 54253155

[redesdale.mia.mia.ps@education.vic.gov.au](mailto:redesdale.mia.mia.ps@education.vic.gov.au)



# Redesdale & Mia Mia Primary School and the DASH program.

The DASH program, developed by Blue Light Victoria was a 9 week program that ran last year in 2023 for RMMPS grade 4-6 students. The objective was to deepen community connections and belonging for young people, increasing their awareness and trust in local services, supports and each other.

The students developed a student led community project which included working with police, emergency services and the local council. They engaged in weekly sessions for a term where they learnt many facets of community and how the people in it help and support each other.

The students produced a project that they thought was valuable to their community, which they had to showcase and present their ideas to a panel. This was judged at the end of the program and consequently they were awarded \$2000 to assist in maintaining the connection between students who had transitioned to secondary school and those that remained at Primary School.

This commenced at the beginning of the 2024 year, where the money has been used for the hire of the Redesdale Community Hall and food for the monthly catch ups. This has been coordinated by one of the parents. All students have reported how much they love going to the DASH program and catching up with their friends.

The latest get-together in April saw them interact with members of the Redesdale CFA brigade on the Redesdale Reserve. A briefing was given about the various pieces of equipment found on a tanker. One of the main functions of the tanker – using a hose to direct water – was practically demonstrated by having competitions to push model tankers along the cricket pitch. This was a great hit with both attending children and parents.



# Bin Collection

## For those in the City of Greater Bendigo

First of all – lucky things!  
Most of us in Redesdale-Mia Mia who are in the Mitchell or Mount Alexander Shire have no bin collection!

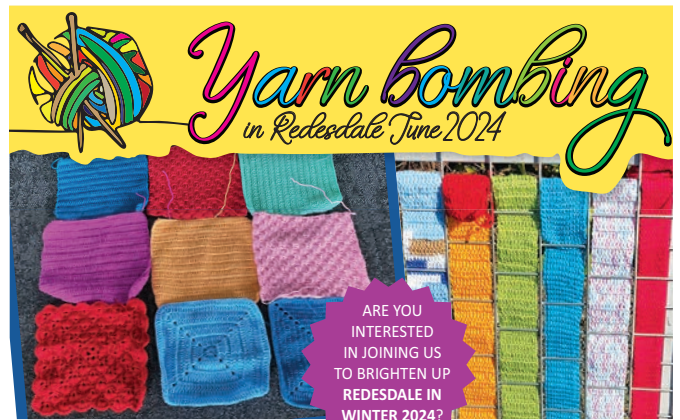
### There is now a:

**WEEKLY** collection of your organics bin,

**FORTNIGHTLY** collection of your recycling bin, and a

**FORTNIGHTLY** collection of your general waste bin.

Visit [www.bendigo.vic.gov.au/waste](http://www.bendigo.vic.gov.au/waste) for information regarding your rostered fortnightly schedule.



We are 'Yarn Bombing' Redesdale in May-June 2024, to coincide with

**International Yarn Bombing Day, June 11, 2024.**

We will decorate the Redesdale Hall fence to and including the gates and the surrounds of the hall verandah.

if we have enough help. Are you interested in joining us?

please text 'Redesdale Yarners' on **0408 307 105**.

For more informaton please contact us through our:

Facebook Group Bridge Connecton Community Newspaper.

if you have scraps of acrylic wool and would be willing to donate we woul greatly appreciate any help.

Redesdale Yarners

**0408 307 105.**



The newly erected post box at the hall will serve as a drop box for any articles or letters you would like to post for possible inclusion.

text or call **0437 514 223** or email

[bridgeconnection.editor@gmail.com](mailto:bridgeconnection.editor@gmail.com)

**If you leave anything for us to collect**

## Did you know: there is a free Foodbank in Kyneton.



The Kyneton Kindness Collective operates from the Op Shop @ 60 Mollison Street in Kyneton. It's tucked away at the back, so you kinda have to know it's there, but if you make your way through the Op Shop (and there are some great bargains in there!), you will find both a community dining room AND a pantry. In fact, there is a rear car park, so you don't have to enter via the shop and you can take your things straight to your car.

It is completely free. No cost. Nothing. All you need to do is pop in, ask to speak to someone about the Foodbank service and one of the team will sit down with you and talk about what you need and what they offer. There is no 'entrance criteria' – they know that doing it tough can look different for everyone at different times. They just want to help people get food on their table. Once you're registered as a client (a simple process), you then have access to the Foodbank: this is just to make sure that when do you come in, they've already got your details and you don't have to keep repeating it every visit.

Of course, there are limits on how much you can get at any given time (depending on your circumstances) but this is just to ensure that there is enough food to go around...for everyone who needs it.

There's a huge selection of foods – everything from soup to meat and 3 veg to biscuits! They even stock Ready to Eat options – fresh and frozen. There are also some household and personal items – tissues, hand towel, nappies, soap, shampoo etc.

This is an amazing place. There is also a Soup Kitchen: established to ensure they can provide a hot meal to local community members who find themselves in need and to hold community lunches to promote community connection. It's also where they make up some of the FoodShare meals. It's open to everyone: all they ask is that you give what you can, if you can.

And there's more! There is a "Drop In" space that offers a safe and friendly environment for locals to stop in for a cuppa and a chat and on Thursdays, by appointment only. There is a free counsellor available to local community members who find themselves in need (some T&C's apply).

They've been doing all this as an independent, self-funding charitable association for over 10 years and continue to extend their services and the communities they support. Amazing!

If you want to know more, you can check out:

Website: [www.tkc.org.au](http://www.tkc.org.au)

Email: [hello@tkc.org.au](mailto:hello@tkc.org.au)

Phone: 03 5422 1162

Visit 60 Mollison Street, Kyneton



### Redesdale Yoga is back for 2024!!!!

So, come and join our local yoga teacher – Tania – on **Wednesdays** and/or **Saturdays** to discover the many physical and mental benefits of yoga.

*No prior experience or minimum fitness level is required.*  
Just bring a mat, hand towel and water, wearing comfortable clothing.

**Redesdale Reserve Community Pavilion**

**Wednesdays 5:30pm – 6:30pm**  
**Saturdays 9:00am – 10:30am**



For space availability and prices contact  
E: [glendenecottage@gmail.com](mailto:glendenecottage@gmail.com)  
M: 0403 659 741

# We're hosting a Biggest Morning Tea

Please help us  
support people  
impacted by cancer!



Redesdale & District Association  
is proud to support the Cancer Council by  
hosting

**Redesdale's Biggest Morning Tea**

**Redesdale Community Hall**

**Thursday 23rd May 2024**

**10:00 a.m. to 12:30 p.m.**

**\$10 for a  
pot of tea/coffee with a scone, jam and cream. \***

**There will be a large selection of donated locally  
baked and crafted produce for sale \***

\* 100% of ALL donations and purchases  
will go to Australia's Cancer Council



[Click Here for details or to donate](#)

## Sutton Grange Anzac Ceremony



**Andrew Hampton**

Sutton Grange Anzac Ceremony where Andrew Hampton gave a very interesting and moving speech of his father Alan Hampton's time in the war.



**The CWA Made poppies were amazing**

**Mavis Collison**

ADVERTISEMENT

# Lisa Chesters MP

FEDERAL MEMBER  
FOR BENDIGO



☎ 5443 9055

🌐 [lisachesters.org](http://lisachesters.org)

Authorised by Lisa Chesters, ALP,  
16 Myers St, Bendigo



# Annabelle CLEELAND MP

Proudly supporting the  
Redesdale Community

🌐 [AnnabelleCleeland.com.au](http://AnnabelleCleeland.com.au)

📍 25 Bridge St E, Benalla

📱 [Annabelle4Euroa](https://www.facebook.com/Annabelle4Euroa) 📞 03 5762 1600

✉ [Annabelle.cleeland@parliament.vic.gov.au](mailto:Annabelle.cleeland@parliament.vic.gov.au)



Member for  
*Euroa*

## CONNECTIVITY

The Albanese Government is delivering a tax cut for every taxpayer in the Bendigo electorate starting on July 1.

Labor's new tax cuts are designed to provide cost-of-living relief to middle Australia while making our tax system fairer.

Around 66,000 people – every taxpayer in the Bendigo electorate will receive a tax break from July 1 under Labor's better tax cuts.

Around 58,000 people, or 88 per cent of taxpayers, will receive a bigger tax cut than they would have under the plan Scott Morrison's Liberal Government legislated five years ago.

Among them is hospitality worker Kjell, who will now save an estimated \$1,304 under Labor's fairer tax cuts plan. Under the previous Government's tax plan Kjell would have received a \$500 tax cut – less than half what he will receive under Labor's plan.

Damien, a local nurse from Lockwood South, will receive a \$2,079 tax cut under Labor's plan. This is \$804 more than what he would have received under the Liberals' plan.

Gareth from Strathfieldsaye works in administration and will now receive \$1,338 tax cut under Labor's plan which is more than double the \$534 that he would have received under the Liberals' plan.

Across the Bendigo electorate, the average tax cut received under Labor's plan will be \$1,424. To find out how much you will benefit from Labor's tax cuts, use the calculator on the Government website: <https://taxcuts.gov.au/>

**QUOTES ATTRIBUTABLE TO FEDERAL MEMBER FOR BENDIGO, LISA CHESTERS MP:**

"Every taxpayer in the Bendigo electorate will now get a tax cut and some, like Kjell, will now receive more than double what they would have received under the previous Government's plan.

"We're delivering more help for working families and more help for locals, putting cash back into people's pockets when they need it most.

"Our tax cuts are about ensuring more workers in Central Victoria can keep more of what they earn because we know that will take pressure off people doing it tough."

Phone and internet connectivity is a major problem for many of our residents. It is a health and safety matter as well as a business and well-being issue. Annabelle Cleeland, our State member for Euroa has voiced her support for our attempts to win recognition for our problems in this area. Many residents have spent a great deal of their own money trying to improve their signals.

It is important to have examples of these lived experiences when petitioning various levels of government for assistance with this problem. Lived experience examples carry weight.

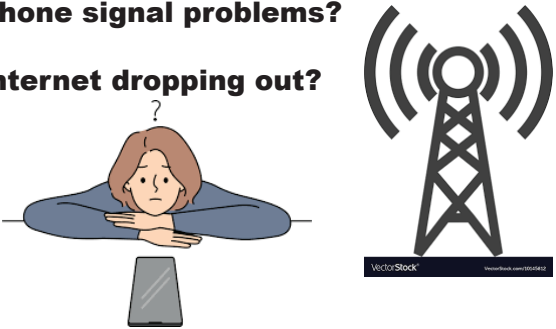
We have received 4 excellent letters from the community, including from the CFA, outlining the importance of adequate communication channels.

We need more.

**Please address your letters to [info@redesdale.net](mailto:info@redesdale.net) by email, or by hard copy into the Bridge Connection drop box at the hall.**

**Phone signal problems?**

**Internet dropping out?**



Please let us know your stories.

The district association is collecting examples of the frustrations our local community continues to have with connectivity. Next year, we will be putting in a concerted effort to bring this to the attention of all levels of government. Please send your stories to [info@redesdale.net](mailto:info@redesdale.net) or post them into the

Bridge Connection mailbox at the Redesdale hall.

# Clean Up Redesdale In 2024



### Did you know...

1. Australia uses over 70 BILLION pieces of 'scrunchable plastic' every year (e.g.: food wrappers)
2. Only 13% of plastic is recycled – the rest goes to landfill
3. In 2023: 1,030,395 people volunteered to "Clean up Australia" at 17,139 sites. Redesdale was one of those!

Can you spare some time to help ... **Clean Up Redesdale**

It won't take long and you get to feel good for doing good.

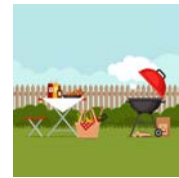
We'll provide bags, gloves, maps AND a BBQ afterwards to reward you for all your good work. Easy!

Saturday June 1<sup>st</sup>

10.30am

Meet at the Pavilion (to sign in)

Agnes Mudford Reserve



## WHEN YOU NEED THE POLICE, BUT NOT THE SIRENS

IF YOU'VE HAD YOUR  OR  GO MISSING,  
COME HOME TO FIND YOUR  HAS BEEN DAMAGED,  
HAD YOUR  STOLEN OR YOUR  BROKEN INTO,  
OR WANT TO REGISTER A  WITH POLICE...



 report online

**ANYTIME**



LEARN MORE





# Redesdale & Surrounds Comming Events

## May

**Sat 4-Sun 5** Redesdale Revellers  
**Sun, 12** Mothers Day  
**Mon 13** Open day RMMPS  
**Thur 23rd** 10-12.30 Aust Biggest Morning Tea.  
**Sat 25-Sun 26** Redesdale Revellers

## June

**Sat 1st** 10.30-12.30 Clean Up Redesdale  
**Mon, 10** Kings Birthday

## October

**Sat- Sun 19th 20th**  
 local open gardens

for more information - [redesdale.net](http://redesdale.net)

- <https://www.heathcote.org.au-kyneton.org.au>
- <https://www.bendigoregion.com.au>
- <https://www.bendigoregion.com.au/visit-castlemaine-maldon>

**REDESDALE  
REVELLERS**  
**LET YOUR STAR SHINE**

**SUTTON GRANGE HALL**  
 921 FARADAY-SUTTON GRANGE ROAD, SUTTON GRANGE

**4 SHOWS OVER 2 WEEKENDS**  
**2PM, SAT & SUN**

**4 & 5 MAY**  
 FOR TICKETS - TRYBOOKING.COM/CPAHC  
 OR CALL 0487 619 473

**25 & 26 MAY**  
 FOR TICKETS CALL MAVIS COLLISON - 0439 748 233  
 OR STEVE BARTY - 0417 524 713

**TICKETS \$25**  
**INCLUDES SHOW & AFTERNOON TEA**

FOR MORE INFO CALL THE REVELLERS HOTLINE - 0487 619 473  
 OR EMAIL - REDESDALEREVELLERS@GMAIL.COM

<b>Ballan</b>	Local Farmers and Makers Market. 2nd Saturday of every month.	<b>9.00 - 1.00pm</b>
<b>Castlemaine.</b>	Local Farmers Market. 1st Sunday of every month.	<b>9.00 - 1.00pm</b>
<b>CFM.</b>	Weekly Market, Wednesday.	<b>2.30 - 5.30pm</b>
<b>Clunes.</b>	Local Farmers Market 2nd Sunday each month.	<b>8.30 - 1.00pm</b>
<b>Creswick.</b>	Local Farmers Market 3rd Saturday every month.	<b>9.00 - 1.00pm</b>
<b>Daylesford.</b>	Local Market. Every Sunday.	<b>8.00 - 3.00pm</b>
<b>Gisborne.</b>	Olde Time Market. 1st Sunday every month.	<b>9.00. - 2.00pm</b>
<b>Kyneton.</b>	Local Farmers Market. 2nd Saturday every month.	<b>8.30 - 1.00pm</b>
<b>Lancefield.</b>	Local Farmers Market. 4th Saturday every month.	<b>9.00 - 1.00pm</b>
<b>Maldon.</b>	Local Farmers Market. 2nd Sunday every month.	
<b>Malmsbury.</b>	Local Farmers Market. 3rd Sunday every month.	<b>9.00 - 1.00pm</b>
<b>Talbot.</b>	Local Farmers Market. 3rd Sunday every month.	<b>9.00 - 1.00pm</b>
<b>Trentham.</b>	Local Farmers Market. 3rd Saturday every month.	<b>9.00 - 1.00pm</b>
<b>Woodend.</b>	Local Farmers Market 1st Saturday every month.	<b>9.00 - 1.00 pm</b>

# REDESDALE COMMUNITY HALL & PAVILION AVAILABLE FOR HIRE

Redesdale gives you a choice of venues for your next party, meeting or event:

**Redesdale Hall:** 160 sqm floor space with stage and expansive catering kitchen, as well as on-site restrooms.

**Redesdale Pavilion:** 108 sqm floor space with panoramic windows overlooking the Redesdale Reserve Oval.

Either of these wonderful facilities are available for community events (1) or public use (2).

- (1) Community - Use of facility targeting community benefit.  
Entrance/participation fees are not charged by organiser.
- (2) Retail - Use of facility for private or business use.  
Entrance/participation fees may be charged by organiser.

**Equipment Rental** Check out the extensive furniture & equipment below to help you hold your event at home

Item:	Available	Item:	Available
Commercial sized steel roaster	1	4 burner BBQ	1
Marquee (Large), 6m x 12m	1	Table cloths, white	10
Marquee (Small), 3m x 3m	1	Chairs, green steel	80
Tables, plastic, 1.8m x 1m	10	Chairs, white plastic	80
Tables, wood, 1.8m x 1m	20	Umbrellas, charcoal	10

For all inspections and enquiries contact Redesdale Recreational Reserve Committee:

E: [3444reserve@gmail.com](mailto:3444reserve@gmail.com)

M: 0408 890 060



## THE REDESDALE HOTEL

Central Victoria's Favorite Country Pub

For bookings please call (03) 4405 0601

Wednesday & Thursday 12pm – 9pm Lunch & Dinner

Friday – Sunday 12pm – Late Lunch & Dinner

PUBLIC HOLIDAYS – Phone for details

Kitchen closes at 8pm everyday

### The Redesdale Hotel

2640 Heathcote - Kyneton Road

Redesdale Vic 3444

[info@theredesdalehotel.com.au](mailto:info@theredesdalehotel.com.au)



The Redesdale Hotel

[redesdalehotel](https://www.facebook.com/redesdalehotel)



[www.theredesdalehotel.com.au](http://www.theredesdalehotel.com.au)

## creative designs for your business

logos menus flyers posters  
 invitations brochures magazines  
 business cards advertisements  
 letterheads with compliment slips  
 full business imaging

lyn ingles | graphic designer  
[blupen@bigpond.com](mailto:blupen@bigpond.com)  
 0429 911 980

Proudly Sponsoring assistance to the 'Bridge Connection'

**CV SHEDS** Est. 1975

**Quality supplier and installer of:**

- Farm Sheds - Work Shops
- Hay Sheds - Garages/Barns
- Quality RHS Frames
- All Australian Steel
- Shed Materials - purlins/ sheeting also available

*Been Building sheds in Central Victoria for over 40 years*

**Come and visit us at 12 Bourke St Kyneton**  
 Mon- Fri 8 am to 4.30 pm, other times by appointment  
 03 5422 6644 or [info@cvsheds.com.au](mailto:info@cvsheds.com.au) [www.cvsheds.com.au](http://www.cvsheds.com.au)



## RECIPE OF THE MONTH

83

### Tasty Chicken Soup



Please do not be put off with the bought components of this soup.

This is a very easy, tasty and filling broth for a cool evening to suit the entire family.

- 1 large chicken
- 4 carrots, diced
- 3 Medium potatoes, diced
- 1 bunch flat leaf parsley, chopped
- 2 cans of cream of chicken soup
- 2 pkts chicken noodle soup

#### Method

Place the chicken in a large stock pot and cover with water

Bring to the boil and simmer for 1 hour

Remove the chicken and shred all the meat from the carcass

To the stock add all the other ingredients, canned soup, carrots, potatoes, parsley and the packet noodles. Stir well.

Add the shredded chicken and simmer for a further 30 minutes.

Your soup is ready.

This also freezes very well.

**Marisa Leahy**

## Knitting & Crochet GROUP



### Get back to Knitting or Crochet...

- Learn new techniques
- Learn to knit or crochet
- Possible knitting and crocheting for charity.

**Every Thursday 1pm - 3pm  
at the Redesdale Reserve Pavilion**

If you are interested in joining please contact:

Gloria Pocock: [gapocock@bigpond.com](mailto:gapocock@bigpond.com) or

Regina Bennett: [reginabennett@bigpond.com](mailto:reginabennett@bigpond.com)

Turn your house  
**into a home**   
**with Tucks**  
locally made products



- Aluminium and Timber Windows
- Window Replacements • Security Doors
- Shower Screens • Wardrobe Doors

We are in your area regularly  
and offer a **FREE** measure  
and quote service.

**We can offer supply and install prices.**



**Tucks  
Windows  
BENDIGO**

Celebrating 43 Years  
providing top quality  
products and  
professional  
friendly service.

P: 03 5446 8855

E: [quotes@tuckswindows.com.au](mailto:quotes@tuckswindows.com.au)

[www.tuckswindows.com.au](http://www.tuckswindows.com.au)

# UNITING CHURCH

Morning Tea is shared 15minutes before each service



**Minister Munchies is on Wednesday  
and starts at 10am.**

For more information go to

[www.macedonrangesunitingchurch.org.au](http://www.macedonrangesunitingchurch.org.au)

## CATHOLIC CHURCH

**Redesdale** 2nd Sunday of each month 11am

You are warmly invited to

# BARFOLD

COMMUNITY  
CHURCH

10.00 am each Sunday

followed by morning tea

1691 Kyneton-Heathcote Rd, Barfold

Contact: Russell 0484 700 909



**Lisa  
Chesters MP**  
FEDERAL MEMBER  
FOR **BENDIGO**

ADVERTISEMENT

☎ 5443 9055

🌐 [lisachesters.org](http://lisachesters.org)

Authorised by Lisa Chesters, ALP,  
16 Myers St, Bendigo



## COMMUNITY DEFIBRILLATOR

Located on the side of the Redesdale fire station  
Access code is 3444 ( Redesdale post code)

The Community owned defibrillator  
is now accessible to all  
community members.



REDESDALE MIA MIA  
PRIMARY SCHOOL PRESENTS

# REDESDALE MIA-MIA PLAY GROUP


**TUESDAYS**  
9:15 AM - 11

FUN SOCIAL GATHERING FOR LOCAL FAMILIES.

All parents, young children and babies welcome.  
Redesdale MM Playgroup is registered with  
Playgroup Victoria.

Held weekly at Redesdale Mia Mia Primary School.

For more info email:  
[redesdalemiamiaplaygroup@gmail.com](mailto:redesdalemiamiaplaygroup@gmail.com)



# MAY Kitchen Garden Action

## Plant or sow in Early Autumn



**PS - Plant Seedling**

**SD - Sow Direct**

**ST - Seedling Tray**

**Artichokes – plant crowns**

**Broad beans - SD**

**Brussels Sprouts -PS**

**Celery – PS**

**Cabbage – PS**

**Carrots - SD**

**Cauliflower- PS**

**Chives - SD**

**Coriander - SD**

**Garlic – plant bulbs with pointy end facing up**

**Kale - PS**

**Leeks - SD**

**Lettuce - SD**

**Mint – SD in a pot to avoid spread in veg patch**

**Mustard Greens- SD**

**Mizuna - PS**

**Onion – SD or PS**

**Pak Choi/Bak Choi – SD**

**Parsley – SD**

**Peas - SD**

**Radish- SD**

**Rocket - PS**

**Spring Onions - PS thickly in wide drills**

**Spinach - PS**

**Turnip – SD**

**PS- Plant Seedling**

**SD – Sew Direct**

**ST – Seedling Tray**

Consider succession planting your veg to avoid harvest gluts

Eg, Broad Beans, Lettuce, Rocket and Asian greens

Apply sulphate of potash to your emerging Broad Beans

Remove tomato plants and hang upside down in a dry spot and the green fruit will continue to ripen.

Alternatively make Green Tom Chutney for your Kyneton Ag Show entry or cook some Fried Green tomatoes for an end of season treat.

Prepare beds for planting Asparagus crowns

Apply liquid fertiliser every 2 weeks

Harvest your pumpkins - sadly I planted mine way too late .

Spray your peach and nectarine trees at leaf fall for leaf curl and spread dolomite (lime) around your stone fruit trees.

Rake up autumn leaves for your compost heap

Happy Gardening

*We can spread any amount that you supply, usually off the ground via industrial loader. We can also get a bulk load and deliver to a number of smaller properties if required.*

# FERTILISER SPREADING SERVICE

**Contact for a quote**

Please contact  
**Carl 0412 144 936**  
or **David 0427 546 586**

email: [carl@glendarling.com.au](mailto:carl@glendarling.com.au)  
**119 Darlington Road Baynton VIC 3444**

**No job too small, no job too big,**

**Redesdale 0.60mm Year to date 192.00mm**

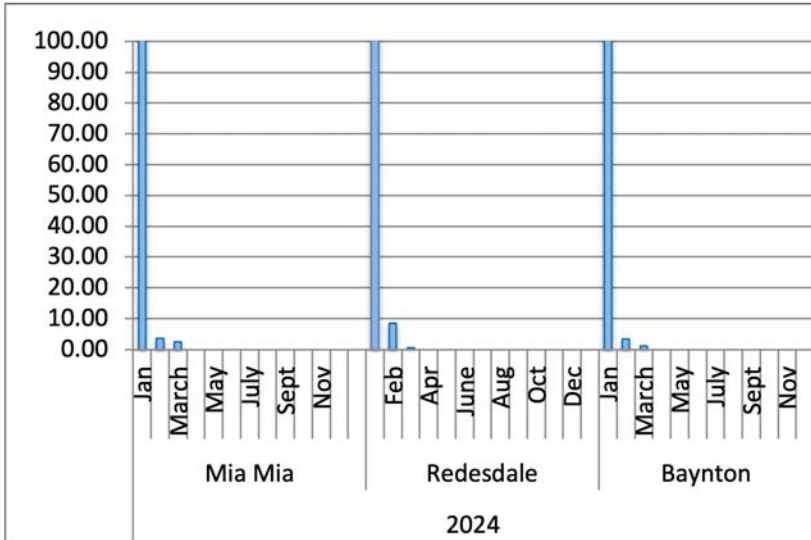
**Mia Mia 2.50mm Year to date 208.00mm**

**Baynton 1.20mm Year to date 213.20mm**

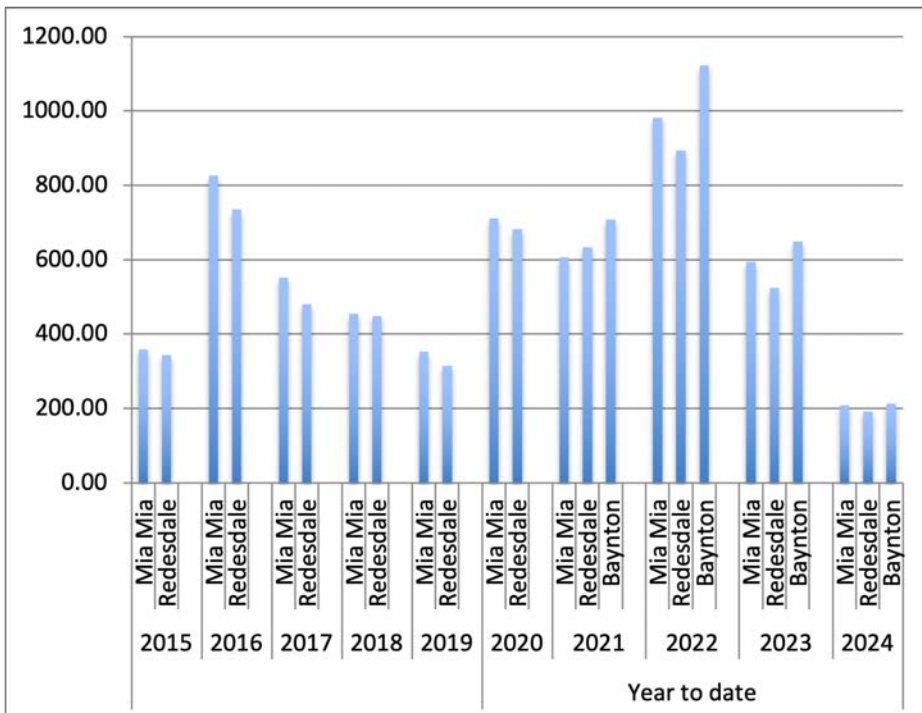
The average yearly rainfall for **Redesdale** is about 601mms.

Thank you to **Helen Bennett** for the **Mia Mia** readings & **Belinda Ryan** for **Baynton** readings

### Year Totals for Previous Years



<b>2017</b>	Mia Mia	551.75
	Redesdale	479.60
<b>2018</b>	Mia Mia	455.00
	Redesdale	448.40
<b>2019</b>	Mia Mia	352.00
	Redesdale	315.00
<b>2020</b>	Mia Mia	711.25
	Redesdale	682.85
<b>2021</b>	Mia Mia	593.50
	Redesdale	634.40
	Baynton	707.80
<b>2022</b>	Mia Mia	981.50
	Redesdale	894.00
	Baynton	1122.30
<b>2023</b>	Mia Mia	593.90
	Redesdale	524.40
	Baynton	648.40



# FEET

**Expressions of interest!**

**Feedback please!**

Would you be interested in attending a visiting podiatrist if it could be arranged for one to visit Redesdale on a regular basis?

Please respond by text  
to 0407 116 899 or  
email;  
[kathhall32@gmail.com](mailto:kathhall32@gmail.com)

Kathy Hall

RADA



©DESJ

# SUPPORT YOUR ADVERTISERS

## 'THE BRIDGE CONNECTION COMMUNITY NEWSPAPER'

...is **supported** by **local businesses** and it is important, in return

for the community to **support them**.

For rural regions to succeed in business they need the 'locals' to keep them viable by conducting business in our township. So! next time you need something for a job that you are working on... look to the

'**Bridge Connection**' and give a **LOCAL BUSINESS** a try.

**BUY LOCAL  
WHERE YOU  
ARE ABLE TO.**

**SUPPORT THE TOWN THAT  
SUPPORTS YOU... THANK YOU!**

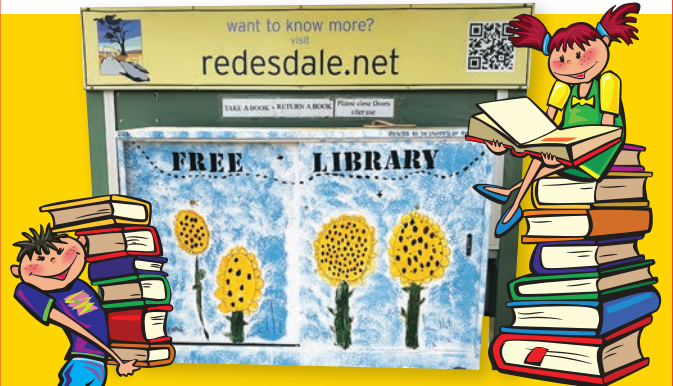


To advertise in the 'Bridge Connection' please contact the Editor

Regina Bennett on: **0437 514 223** OR email [bridgeconnection.editor@gmail.com](mailto:bridgeconnection.editor@gmail.com)



# LITTLE FREE LIBRARY



Please '**donate**' by simply adding Books, Magazines and DVD's to the cabinet... *Thank you*

Located behind the  
Community Notice Board  
Inside the Redesdale Recreation Reserve  
**Redesdale Recreation Reserve,**  
2631 Kyneton - Redesdale Road  
Redesdale Vic 3444

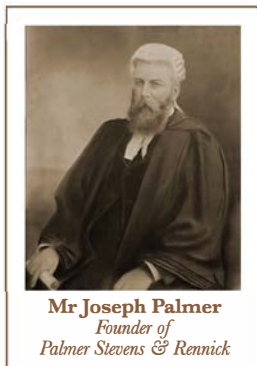
## Palmer Stevens & Rennick Barristers & Solicitors *Founded 1852*



## Palmer Stevens & Rennick

provide advice to clients all over Australia.

- Powers of Attorney
- Wills and Estates
- Criminal Law
- Conveyancing
- Property Law
- Family Law
- Agribusiness Law
- Commercial Litigation
- Traffic Law and Toll Fines
- Appearing in all Courts
- Pre purchase advice for large Agribusiness Assets
- Compensation for Government Acquisitions



Mr Joseph Palmer  
Founder of  
Palmer Stevens & Rennick

8 Jennings Street, Kyneton  
or P.O. Box 1, Kyneton Vic 3444  
Phone: (03) 5422 6500 Fax: (03) 5422 3385  
Email: [psr@psr.net.au](mailto:psr@psr.net.au)

# A good life deserves the best farewell

## WILLIAM W FARMER FUNERAL DIRECTORS

Andrew and Heather Hampton  
151 McCrae Street Bendigo  
12 Victoria Street Eaglehawk  
**P: 5441 5577**  
[www.williamfarmer.com.au](http://www.williamfarmer.com.au)

*A tradition that continues...*