



ISSUE NO: 150 August 2024

For the Mia Mia- Redesdale Region including:

- Heathcote • Derrinal • Glenhope • Baynton • Sidonia • Barfold
- Langley V Sutton Grange • Elphinstone • Kyneton • Metcalfe

# BRIDGE CONNECTION COMMUNITY NEWSPAPER



<https://www.facebook.com/groups/897527781461431/>

# Celebrating 150<sup>th</sup> Edition

## Bridge Connection

Mia Mia—Redesdale Community Newsletter  
First Edition July 2008

Welcome to the first edition of the *Mia Mia-Redesdale Bridge!*

My name is Berni Campbell and I am the first editor of this newsletter. I'm a local Mia Mia resident, married to Brett, and we have one child, William, who is the 6th generation of the Campbell family to live on our farm.

My reason for getting this newsletter off the ground is threefold: to let everyone in our Mia Mia-Redesdale community and beyond hear of the wonderful happenings of our region, to increase communication amongst groups and individuals in our area, and lastly to provide some interesting and entertaining reading matter.

This newsletter will be published monthly and your contributions will be enthusiastically received! Let's make our newsletter appealing to everyone—with your contributions and suggestions we're bound to achieve this!

Thanks so much to everyone who has contributed to this first edition. Thanks also to those individuals and businesses who have agreed to sponsor this newsletter—without your support the newsletter would not be possible.

Now, on with the show!  
Warm regards,  
Berni

## Free Community Newsletter!



Redesdale Revellers in Action—Agnes Mudford and Co.



Greta McCarthy and kitchen team cooking up a storm for the booked out season of Redesdale Revellers.



Chris Archdall being closely supervised by Sue Newnham.

This newsletter is produced by the Mia Mia Mechanics Institute and distributed to approximately 200 homes in Mia Mia and Redesdale in the first week of each month.  
With additional copies available at various locations in Heathcote, Kyneton and Aaxedale.  
To include information in future issues, please forward these to Berni Campbell via email to [willbernhouse@yahoo.com.au](mailto:willbernhouse@yahoo.com.au), by fax to 5425 5591, or by post to RMB 560, Mia Mia 3444 by the last day of the month prior.



ISSUE NO: 149 July 2024

For the Mia Mia- Redesdale Region including:

- Heathcote • Derrinal • Glenhope • Baynton • Sidonia • Barfold
- Langley V Sutton Grange • Elphinstone • Kyneton • Metcalfe

# BRIDGE CONNECTION COMMUNITY NEWSPAPER



<https://www.facebook.com/groups/897527781461431/>

## Clean-up Redesdale

— another annual RaDA event to improve Redesdale



### Redesdale 'clean-up crew' - making a difference to their community.

Saturday 1st June saw 18 community residents focus their efforts on cleaning the roadsides around Redesdale. This is an annual event, dovetailing into the national 'Clean-up Australia' movement. The main areas of attention included Kyneton-Redesdale Road from McNeill's Road to Clark Street, Lyell Road from Kyneton-Redesdale Road to Mt. Lofty Road, the Agnes Mudford Reserve, and 400m either side of the Lyell Road round-about.

Whilst the amount and variety of the rubbish carelessly dropped and discarded by uncaring members of the public and passing traffic was truly disappointing, we would prefer to remember the impressive enthusiasm and effort of the attending 'cleaners'.

A small barbeque lunch was provided by RRBC for all as thanks for generously contributing an hour of their time.

### Thanks also go to:

- Members of the RaDA committee, who contributed more of their time and effort to ensure the clean-up was safe and well organised.
- Those members of the community who quietly, on any particular day, continue to pick up rubbish around their areas to make the presentation of Redesdale just that little bit better.
- Clean-up Australia, for providing gloves and collection bags.
- CoGB for allowing the collected rubbish to be dropped at the Heathcote Transfer Station at no cost.

THANK YOU

COVER CONCEPT COURTESY/ blue pencil publishing

The 'Bridge Connection' Community Newspaper has been serving the Mia Mia /Redesdale Region since July 2008. It has become a voice for these communities versing the activities, sporting events, markets, businesses and family occasions.

The 'Connection' is a conduit reporting and sharing what the communities provide, support and celebrate.

Community newspapers are a vital link to their regions and deliver a much needed source of information to residents who rely on being in touch, and, giving those that live in the outer areas support.

The 'Bridge Connection' is fully supported by volunteers who have the passion to provide a newsworthy monthly magazine for your community.

## Congratulations great effort!



Keeping our communities informed.

The SES Heathcote Unit proudly showcases their emergency response ute, with new valuable upgrades thanks to the Fosterville Community Grant they received.



## Fosterville Gold Mine Community Grants – applications now open

The Community Grants Program aims to support initiatives which actively contribute to the growth of our local communities both now and into the future.

Applications open  
Friday 23 August at  
9am and close Monday  
23 September at 5pm



**AGNICO EAGLE**  
FOSTERVILLE

W: [fgmcommunity.com.au](http://fgmcommunity.com.au)

E: [fgm.community@agnicoeagle.com](mailto:fgm.community@agnicoeagle.com)

# Editorial

Hello Readers,

Welcome to our 150th edition of the Bridge Connection this edition has a few reports from community meeting that have taken place in the last month.

Dont forget to visit Bek's Cafe opening this month in Redesdale.

Keeping warm & stay safe till next edition.

Regina Bennett



Regina Bennett

**Editor:** Regina Bennett

**Ph:** 0437514223

**e:** [bridgeconnection.editor@gmail.com](mailto:bridgeconnection.editor@gmail.com)

## Bridge Connection

### - Mission Statement -

The mission of **Bridge Connection** is to bring people together by:

1. Providing information about local issues, goals and events, and to celebrate local achievements,
2. Encouraging economic growth in the area
3. Fostering geographic identity, and
4. Providing a platform for public debate

Bridge Connection is published by local people who volunteer, for local people as a **free paper** and on line at **redesdale.net** and via **face-book**



<http://www.facebook.com/groups/897527781461431/>

Keep in touch with us and what's happening in our community.



[www.redesdale.net](http://www.redesdale.net)



Redesdale & District Association



[redesdale\\_vic](https://www.instagram.com/redesdale_vic)



## BRIDGE CONNECTION COMMUNITY NEWSPAPER

### Advertising Rates/Sizes

Size	Height x Width	Price per issue	10 Editions
Business Card	55mm x 90mm	\$25	\$250
Quarter Page	130mm x 90mm	\$50	\$500
Half Page	130mm x 190mm	\$95	\$950
Full Page	270mm x 190mm	\$175	\$1,750

**Colour Advertisements plus 20%.**

**Please Note:  
COPY DEADLINES  
17th OF EACH MONTH**

Please send editorial or advertising copy to:  
**bridgeconnection.editor@gmail.com**  
or by post to **Regina Bennett 3465 Burke & Wills track Mia Mia 3444.**  
For other editorial enquiries, please phone **0437 514 223**

### Bridge Connection Distribution

950 Copies printed and distributed to Redesdale Mia Mia Region, including Barfold, Baynton, Derrinal, Elphinstone, Glenhope, Kyneton, Langley, Metcalf, Sidonia and Sutton Grange

**Disclaimer:** The Bridge Connection Inc. Committee wishes to advise that the views or remarks expressed in this publication are not necessarily the views of the volunteer Bridge Connection Inc. editorial or production team and no service or endorsement is implied by the listing of Advertisers, sponsors or contributors. Although every effort is taken in reproducing and printing advertisements correctly, we take no responsibility for errors.

### Management Committee

President : **Gloria Pocock**

Secretary: **Regina Bennett** (03) 5425 5402  
[bridgeconnection.secretary@gmail.com](mailto:bridgeconnection.secretary@gmail.com)

Treasurer: **Marisa Leahy** 0415 384 217

Magazine: **Regina Bennett - Editor** 0437 514 223

# Telstra mobile connectivity at Redesdale

On Wednesday July 3rd, a number of people took advantage of the Telstra “Pink Truck” parked outside the Redesdale Hotel for most of the day. The technicians aboard were there to answer questions regarding problems with Telstra signals and to give advice.

There were several people who felt they were helped through this customer service, however the issue remains that the district will not be properly covered with adequate signal until another tower is built. The Telstra tower serving this district is on Mount Alexander and it casts some significant “shadows” across our hilly landscape. (The shadows are where the signal drops out). The newish tower in Mia Mia is NBN and Optus - not Telstra.

On the same day, our Nationals MP, Annabelle Cleeland, held a community meeting at the Redesdale Hotel. Annabelle has been a vocal spokesperson on

behalf of a number of communities in her electorate who have connectivity problems. She is particularly aware of the Redesdale issues as you will have seen in previous articles in Bridge Connection. The meeting was well-attended and

was addressed by Marcus Swinburne, Telstra’s regional engagement manager for northern and western Victoria and regional Australia. He confirmed that the answer for our area is a new tower and the cost is estimated to be approximately \$1million. Our area would be competing for this investment with several other communities with similar problems. Telstra is a private enterprise and profitability is key to their ethos, so we may have an uphill battle.

However, there are some key elements to our community which make it probable we could launch a good case to Telstra for a new tower. But we would have to do this as community teamwork. Our latest activity has put our name firmly on the list of communities with an axe to grind. One of the most helpful activities of late was the gathering of some excellent letters from customers having problems with the service. These personal letters really help – particularly at a political level.



We need more letters.

Some of the key issues which make a case compelling are:

- Safety
  - o Elderly community, health, travelling at night etc
  - o Bush fires
  - o Poor reception at Mia Mia 'safe gathering place'
  - o Domestic violence
  - o Road accidents – poor roads, kangaroos etc
  - o Social interaction – eg driving at night to social events
  - o Most populous road in Redesdale has no Telstra reception
- Tourism
  - o Visitors to lake Eppalock swell population at holiday times
- Emergency management
  - o Bush fires
  - o Road accidents
  - o Farm accidents
  - o Stock management

Another helpful piece of information from Marcus was the address of a website called; [beconnected.esafety.gov.au](https://beconnected.esafety.gov.au) This site has free online courses and resources on everything digital. It really is worth exploring this website.

Please write to the Redesdale and District Association about your case for improving coverage in your area and we will continue our pressure for a new tower.

**Kathy Hall**

**Redesdale and District Association**

**0407 1168 99**

**info@redesdale.net**



We are well and truly in the midst of winter and it may be timely to have a reminder of what we need to do to avoid a fire in our own home.

Statistics show that the most common time for a house fire to start is in the hour from 6 to 7pm. This will most likely start from an unattended stovetop while the family's evening meal is cooking. Obviously, don't leave the stovetop unattended but if something happens to go wrong, a fire blanket is the best way to quell the fire. Water will only spread the threat, a fire blanket is a good investment and can be purchased reasonably cheaply from most hardware stores.

Also a good investment is a smoke alarm. Stats show that in the event of a house fire, a home with one or no smoke alarms at all are rarely saved. A home with two or more working alarms are much more likely to be safe, with the chances of survival rapidly increasing with the more smoke alarms that are fitted.

The new Lithium battery powered smoke alarms have a ten year life span and require little maintenance. These are available from many places including local hardware stores for around the \$40 mark.

Electrical fires can be avoided by taking the simple steps of unplugging unused appliances when not in use. Avoid piggyback plugs and overloading power boards. Turn off electric blankets when going to bed and make sure scented candles are snuffed out.

Most of us have definitely got the home fires burning by this stage of winter and keeping warm is a priority. It is a good time to have a bonfire, or clean up your property, but please remember to register your burn by dialling 1800 668 511. Registering your burn will save an embarrassing and annoying turn out by your local brigade.

Stay safe.

**Andrew Campbell**

**Community Safety Officer.**



# SAVE the DATE



**162nd  
Kyneton  
Agricultural  
Show**

**FRI 15 & SAT 16  
NOVEMBER 2024**



[www.kynetonshow.org.au](http://www.kynetonshow.org.au)

# Knitting & Crochet GROUP



**Get back to  
Knitting or  
Crochet...**

- Learn new techniques
- Learn to knit or crochet
- Possible knitting and crocheting for charity.

**Every Thursday 1pm - 3pm  
at the Redesdale Reserve Pavilion**

If you are interested in joining please contact:  
Gloria Pocock: [gapocock@bigpond.com](mailto:gapocock@bigpond.com) or  
Regina Bennett: [reginabennett@bigpond.com](mailto:reginabennett@bigpond.com)

# Insure our way, the local way




Our team at Elders insurance Kyneton can look after all your insurance needs and is totally worthy of your trust. Because unlike other insurance providers we actually live and work in your community and take the time to come to you and understand your situation. We can even approve some claims on the spot.

Contact **Melanie Duggan**  
for a personalised quote today  
**03 5423 3007**






[eldersinsurancekyneton@elders.com.au](mailto:eldersinsurancekyneton@elders.com.au)  
83 Edgecombe Road , Kyneton  
Elders Insurance Kyneton

Falconer Holdings Pty Ltd aff RJ & SA Falconer Family Trust ABN 27733987494 trading as Elders Insurance Kyneton AF No. 285618 is an Authorised Representative of Elders Insurance (Underwriting Agency) Pty Limited (ABN 56 138 879 026, AFSL 340965) (EUA), EUA, acting under its own AFSL. It is authorised to distribute Elders Insurance products on behalf of QBE Insurance (Australia) Limited (ABN 78 003 191 035, AFSL 239545), the product issuer. Visit [www.eldersinsurance.com.au](http://www.eldersinsurance.com.au) to consider the Product Disclosure Statement and any applicable Target Market Determination to decide if the product is right for you.



# LITTLE FREE LIBRARY

want to know more?  
visit  
[redesdale.net](http://redesdale.net)

**FREE LIBRARY**

Please 'donate' by simply adding  
Books, Magazines and DVD's  
to the cabinet... *Thank you*

Located behind the  
Community Notice Board  
Inside the Redesdale Recreation Reserve  
**Redesdale Recreation Reserve,**  
2631 Kyneton - Redesdale Road  
Redesdale Vic 3444

# Canine Complementary Therapist

Hello Readers,

This month I'd like to touch on Arthritis and management for Dogs which can also be useful for most other animals.

There are 3 main types of Arthritis that dogs are diagnosed with and are anatomically the same as humans.

**Osteoarthritis (OA):** OA is a degenerative disease of the joints and affect the whole joint, inclusive of cartilage and synovial fluid which acts as a lubricant for the joint. This then affect the surrounding bone as the joint function has changed. Many dogs are very stoic and during the first stages the untrained eye may not pick up on the signs of gait change. By the time OA is diagnosed it is often in the later stages of the disease.

**Rheumatoid Arthritis (RA):** RA is an autoimmune disease, this where the bodies immune system attacks the joints. The immune system which is predominantly found in the gut, sends out Inflammation to fight off issue like bacteria, viruses and other invaders. However, when it becomes dysfunctional it will target areas of the body randomly and when triggered. In RA, it targets the joints of the body. Sometimes it can attack more than 5 joints at once and this then becomes classed as Polyarthritis which can be extremely painful for dogs and people. With RA it can be triggered by something to cause the dysfunction in the immune system and rapidly onset over a few hours, but more often is noticed slowly over time.

**Post Trauma Arthritis (PTA):** PTA is caused by trauma to the joint, this can also include muscular injuries which causes instability to the join and its function. Trauma, especially untreated, causes wear and tear to accelerate to the cartilage, bone and synovial fluid.

**Signs of arthritis:** Lameness, Un-willing to readily partake in usual activities, struggling to get up, hopping or favoring one or more legs, cracking on joints and stiffness, hind limbs not tracking, getting cranky easily especially with other dogs, going off food, in some cases the joint will swell and become warm or even hot to touch, Cold feet can also be a sign they are lacking circulation which means the joint and limb may not be functioning correctly.

**Preventing Arthritis:** Feeding fresh species appropriate diet where possible, Studies have shown that even adding Raw food to kibble increases health in dogs, minimize cooked fats and carbs, Keeping the dog fit, of healthy weight and mentally stimulated, ensure the diet is high in balanced omegas 3-6. Addressing any injuries or pain straight away.

For Immune mediated prevention: Have Titer

testing done prior to vaccinations, be mindful of the over usage of antibiotics and ensure the gut health is protected and cared for with Pre and Pro biotics, balanced nutrition and conduct regular detoxes with Milk thistle.

**After Diagnosis Care:** As cold will increase Symptoms and pain, keep them warm during winter allow outside dogs inside or a warm coat, with warm thick soft bedding and ensure they are protected from the weather. Myo-manipulative functional therapy, acupuncture, keeping active by gentle exercises like Walking, hydrotherapy or conditioning exercises, avoiding exercise that will jolt the joints. Muscular skeletal supporting supplements that have Collagen, Omega 3, Vitamin C, Glucosamine and Chondroitin.

**In the early stages:** Use anti-inflammation products like green lipped, black or blue mussels, MSM, Rosehips, and Devils Claw.

**Later stages:** Continuing early-stage treatment together with your Vets recommendation for NSAIDs (nonsteroidal anti-inflammatory drugs), there are also numerous injections you can discuss with your vet for during the later stages.

If you have any questions or like to book a CMFT, CCFC or HCN consult, or are looking for supplements, please reach out.

Pats for all of your pets,

**Chevelle Williams, CMFT, HCN, CCFC, DipCanCom, DipMBSR**



# Local Council Listening Post



On July 5, 2 of our Eppalock Ward Councillors – Margaret O’Rourke and Greg Penna – came to Redesdale for a Listening Post. Whilst attendance was disappointingly low, it was a great opportunity to talk with these two councillors about ... almost anything ‘local’! Topics covered included:

- Weeds – what are our options about addressing the growing weed problem on private property in and around Redesdale;
- Wombats – how do we go about protecting the growing population of local wombats, particularly down the near the rivers/ bridges;
- Walls – the stone wall that surrounds the Agnes Mudford Reserve. What are our options around rebuilding / protecting it;
- Reserve Precinct Phase 2 - installation of a waste disposal point;
- Stone Reserve - progress update; and
- Rates – rationale behind recent increases.

Councillors were also asked about:

- Speed limit review;
- Clearance signs on the bridges in and out of Redesdale; and the
- Maintenance of the public toilets.

What took up most of the hour we had together, however, was the discussion about upcoming Council elections. With the recent move to ‘single Wards’, Redesdale will have only one Councillor. Currently we have 3 that share the coverage of the Ward’s constituents).

None of our three Councillors: Margaret, Greg and Matthew Evans (Bendigo’s Deputy Mayor; who made his apologies as he was interstate) are standing for re-election.

Further, there are currently no candidates for our Ward. Despite our best efforts, we could not convince Marg or Greg to stay for another term. Both expressed a strong desire to support any prospective candidate through the process. We just need a candidate!

Thanks to our Councillors for the honest answers to our questions; and the free coffee! We thanked them on behalf of the Redesdale community for their support and representation.

- Vehicle signage
- Office signage
- Wedding & Event signs
- Building signage
- Wall wraps

20-22 Deborah Street, Bendigo

E [info@bartnprint.com.au](mailto:info@bartnprint.com.au)

T 5441 6600



[bartnprint.com.au](http://bartnprint.com.au)



# Thank You for Your Service



It is with mixed emotions that we announce the departure of Gary Prendergast, our long-term member and Treasurer, from the Redesdale Recreation Reserve Committee of Management.

Over nearly a decade, Gary played a pivotal role in numerous development projects at the reserve. He consistently, and often quietly, maintained the grounds and gardens, ensuring they were always in top condition.

Additionally, Gary took on the essential task of managing waste, keeping the area clean and welcoming for all visitors by regularly handling the rubbish disposal.

As Treasurer, he meticulously kept the committee's financial records in order, ensuring compliance with all governmental regulations.

We are in the process of confirming Gary's replacement, along with several new committee members, and will announce their appointments soon.

**Redesdale Recreation Reserve Committee**

## SUPPORT YOUR ADVERTISERS

### 'THE BRIDGE CONNECTION COMMUNITY NEWSPAPER'

...is **supported** by **local businesses**

and it is important, in return

for the community to **support them**.

For rural regions to succeed in business they need the 'locals' to keep them viable by conducting business in our township. So! next time you need something for a job that you are working on... look to the

'**Bridge Connection**' and give

a **LOCAL BUSINESS** a try.

**BUY LOCAL  
WHERE YOU  
ARE ABLE TO.**

**SUPPORT THE TOWN THAT  
SUPPORTS YOU... THANK YOU!**



To advertise in the '**Bridge Connection**' please contact the Editor

Regina Bennett on: **0437 514 223** OR email **bridgeconnection.editor@gmail.com**

creative  
designs  
for your  
business

logos menus flyers posters  
invitations brochures magazines  
business cards advertisements  
letterheads with compliment slips  
full business imaging

lyn ingles | graphic designer  
blupen@bigpond.com  
0429 911 980

Proudly Sponsoring  
assistance to the '**Bridge Connection**'



Need to advertise your **business locally?**

Support the

'**Bridge Connection**'

it is a great way to let the community know you are **open for business**.

For more information turn to **page 3** for advertising rates or for more information phone

Editor - **Regina Bennett 5425 5402**

'**Bridge Connection**' Community Newspaper

**Annabelle**  
**CLEELAND MP**  
 Proudly supporting the  
**Redesdale Community**  
 🌐 [AnnabelleCleeland.com.au](http://AnnabelleCleeland.com.au)  
 📍 25 Bridge St E, Benalla  
 📱 [Annabelle4Euroa](https://www.facebook.com/Annabelle4Euroa) 📞 03 5762 1600  
 ✉️ [Annabelle.cleeland@parliament.vic.gov.au](mailto:Annabelle.cleeland@parliament.vic.gov.au) *Member for Euroa*

connectivity improvements in Redesdale, whether it be a new tower located in town or upgrades to infrastructure.”

Ms Cleeland said she would be collecting stories from the local community to ensure the best possible business case can be put forward to Telstra.

“While we heard about the impact of this issue from those who attended, I encourage anyone affected by connectivity issues to contact me with your story,” Ms Cleeland said.

These stories will be shared with ministers responsible for telecommunications at a state and federal level to ensure priority attention on Redesdale when funding becomes available.

While in town, Ms Cleeland also met with local CFA volunteers to hear about the challenges that they were facing.

“Sadly, declining volunteer numbers remain one of the biggest issues for the future of the CFA across our regional towns.” Ms Cleeland said.

“With the entry point for volunteering being made harder, it is simply making it too difficult for those interested to join.

“I will be raising this with the Minister for Emergency Services and continuing to advocate for the future of our dedicated volunteer fire brigades.”

Ms Cleeland can be reached at

**[Annabelle.cleeland@parliament.vic.gov.au](mailto:Annabelle.cleeland@parliament.vic.gov.au) or 03 5762 1600.**

Photo caption: The Nationals’ Member for Euroa, Annabelle Cleeland, met with Redesdale residents and Telstra to discuss ongoing connectivity issues and local CFA concerns.

## Bridge Connection Redesdale – MP meets with community

The Nationals’ Member for Euroa, Annabelle Cleeland, has met with concerned Redesdale residents to discuss the ongoing connectivity issues affecting many in the town.

Ms Cleeland was joined by Marcus Swinburne, Regional Engagement Manager at Telstra, to discuss what can be done for those locally.

“I want to thank everyone who turned up and shared the frustrations that this community has when it comes to a lack of reliable connectivity for both phone and internet services,” Ms Cleeland said.

“While we all know the current level of connectivity is completely unacceptable, being able to share the personal stories about what is happening is so important.

“While there is still a long way to go, sharing your concerns with Marcus and Telstra can make it impossible to ignore the needs of this community.

“I will continue to advocate for any possibility of



ADVERTISEMENT

# Lisa Chesters MP

FEDERAL MEMBER  
FOR BENDIGO

☎ 5443 9055

🌐 [lisachesters.org](http://lisachesters.org)

Authorised by Lisa Chesters, ALP,  
16 Myers St, Bendigo



“This additional investment in Bendigo is another example of the Albanese Government’s commitment to a future made in Australia.

“Protected vehicles such as the Bushmaster are part of the Sovereign Defence Industrial Priorities in the Albanese Government’s Defence Industry Development Strategy, and this announcement shows we are supporting the Australian defence industry to deliver our priorities.”

QUOTES ATTRIBUTABLE TO FEDERAL MEMBER FOR BENDIGO, LISA CHESTERS MP:

“The announcement of an additional 15 Bushmasters will secure jobs for Bendigo locals, and it demonstrates the Federal Labor Government’s commitment to local manufacturing.

“The iconic Bushmaster protected mobility vehicle is supporting defence industry jobs in Australia, as well as saving lives in military operations around the world.

“Bendigo has a proud history of defence manufacturing and the Bushmaster, proudly made here in Bendigo, is one of Australia’s best defence industry and export success stories.”

## GOVERNMENT INVESTS IN BENDIGO WITH NEW BUSHMASTERS

The Albanese Government is continuing to support local jobs in Bendigo with a \$45 million contract to build an additional 15 Bushmaster Protected Mobility Vehicles.

Thales Australia will build the Bushmaster vehicles in Bendigo, supporting hundreds of jobs in the local economy and many more jobs across the supply chain in Victoria.

This contract will continue Bendigo’s more than 20-year history of producing these iconic vehicles that have seen service around the world.

The additional 15 Bushmasters will facilitate command and control of Army’s High Mobility Artillery Rocket System (HIMARS) long-range fires regiment. This supports the Albanese Government’s \$1.6 billion investment to accelerate the delivery of the first land-based long range fires capability for the Australian Defence Force (ADF), ensuring the ADF is equipped to deter potential threats and keep Australia safe.

Since coming to office, the Albanese Government has invested over \$200 million in Bendigo for an additional 93 locally made Bushmasters.

The iconic Bushmaster is currently in use in nine countries and is world renowned for its high level of protection and mobility for troops. In particular, it has seen commendable service in Ukraine through medical evacuation, command and control, and fire support roles as part of Ukraine’s efforts against Russia’s unilateral, illegal and immoral invasion of Ukraine.

QUOTES ATTRIBUTABLE TO MINISTER FOR DEFENCE INDUSTRY, THE HON. PAT CONROY MP:

“I am delighted to be back in Bendigo to announce a further \$45 million investment in the region, with the production of an additional 15 Bushmaster protected mobility vehicles.

Turn your house  
**into a home**  
with Tucks  
locally made products



Quality



& Style

- Aluminium and Timber Windows
- Window Replacements • Security Doors
- Shower Screens • Wardrobe Doors

We are in your area regularly and offer a **FREE** measure and quote service.

*We can offer supply and install prices.*



**Tucks  
Windows  
BENDIGO**



**Tucks  
Windows  
BENDIGO**

Celebrating 43 Years  
providing top quality  
products and  
professional  
friendly service.

P: 03 5446 8855    E: [quotes@tuckswindows.com.au](mailto:quotes@tuckswindows.com.au)

[www.tuckswindows.com.au](http://www.tuckswindows.com.au)



# June Rain Fall

Redesdale 18.00mm Year to date 322.60mm

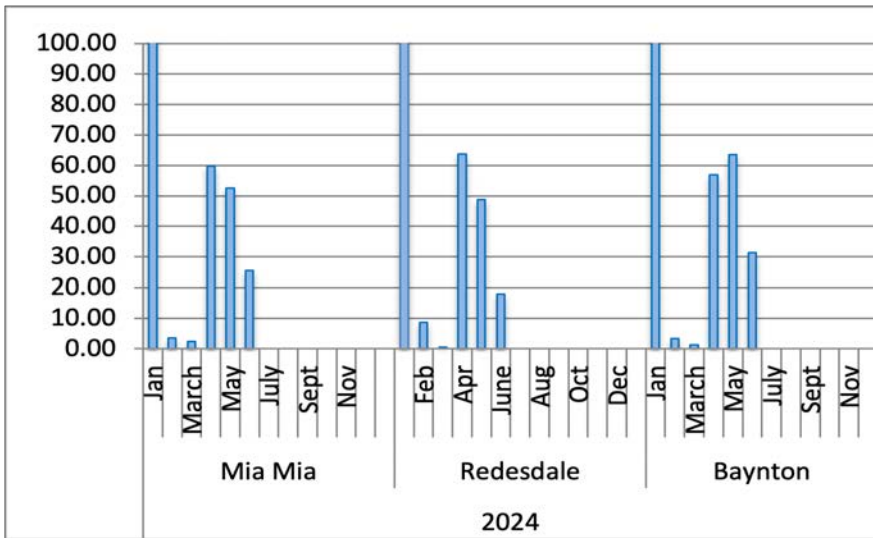
Mia Mia 25.50mm Year to date 345.75mm

Baynton 31.40mm Year to date 365.20mm

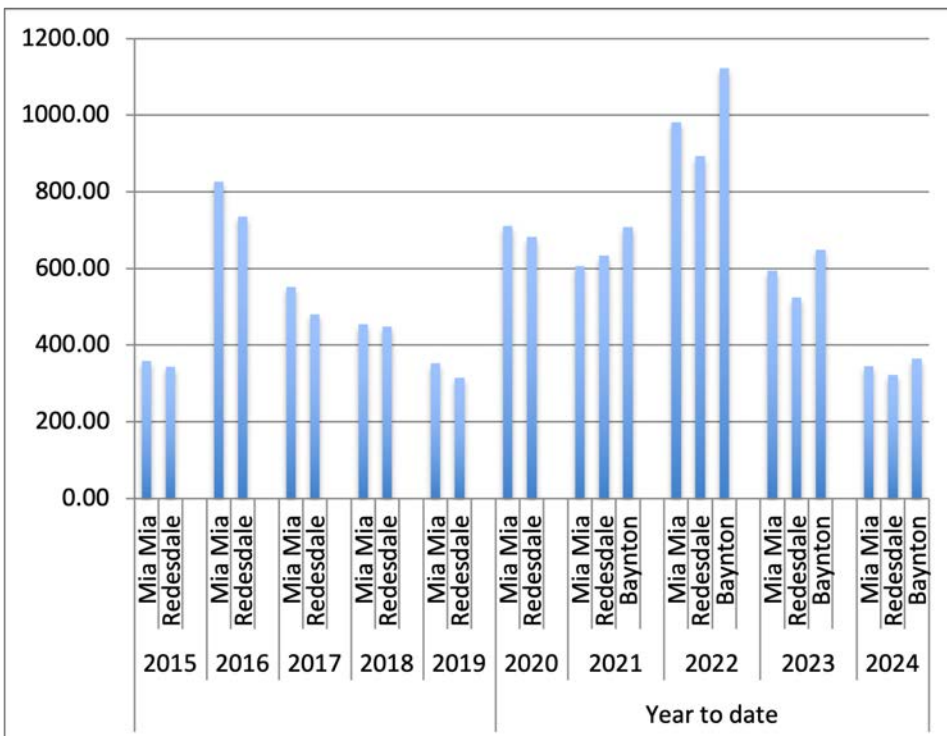
The average yearly rainfall for **Redesdale** is about 601mms.

Thank you to **Helen Bennett** for the Mia Mia readings & **Belinda Ryan** for Baynton readings

## Year Totals for Previous Years



<b>2017</b>	Mia Mia	551.75
	Redesdale	479.60
<b>2018</b>	Mia Mia	455.00
	Redesdale	448.40
<b>2019</b>	Mia Mia	352.00
	Redesdale	315.00
<b>2020</b>	Mia Mia	711.25
	Redesdale	682.85
	Baynton	707.80
<b>2021</b>	Mia Mia	593.50
	Redesdale	634.40
	Baynton	707.80
<b>2022</b>	Mia Mia	981.50
	Redesdale	894.00
	Baynton	1122.30
<b>2023</b>	Mia Mia	593.90
	Redesdale	524.40
	Baynton	648.40





# Redesdale & Surrounds Comming Events

## August

**Fri 16 Aug 2024 - Sun 25** Melbourne International Film Festival (MIFF) returns to Star Cinema

## September

**Thur 5th- Sun 19th 15th**  
Kyneton Daffodil & Arts Festival

**Sat 28th** AFL Grand final day

## October

**Sat- Sun 19th 20th**  
local open gardens

## November

**Tue 5th Nov**  
Melbourne Cup day

for more information - [redesdale.net](http://redesdale.net)

- <https://www.heathcote.org.au-kyneton.org.au>
- <https://www.bendigoregion.com.au>
- <https://www.bendigoregion.com.au/visit-castlemaine-maldon>

<b>Ballan</b>	Local Farmers and Makers Market. 2nd Saturday of every month.	<b>9.00 - 1.00pm</b>
<b>Castlemaine.</b>	Local Farmers Market. 1st Sunday of every month.	<b>9.00 - 1.00pm</b>
<b>CFM.</b>	Weekly Market, Wednesday.	<b>2.30 - 5.30pm</b>
<b>Clunes.</b>	Local Farmers Market 2nd Sunday each month.	<b>8.30 - 1.00pm</b>
<b>Creswick.</b>	Local Farmers Market 3rd Saturday every month.	<b>9.00 - 1.00pm</b>
<b>Daylesford.</b>	Local Market. Every Sunday.	<b>8.00 - 3.00pm</b>
<b>Gisborne.</b>	Olde Time Market. 1st Sunday every month.	<b>9.00. - 2.00pm</b>
<b>Kyneton.</b>	Local Farmers Market. 2nd Saturday every month.	<b>8.30 - 1.00pm</b>
<b>Lancefield.</b>	Local Farmers Market. 4th Saturday every month.	<b>9.00 - 1.00pm</b>
<b>Maldon.</b>	Local Farmers Market. 2nd Sunday every month.	
<b>Malmsbury.</b>	Local Farmers Market. 3rd Sunday every month.	<b>9.00 - 1.00pm</b>
<b>Talbot.</b>	Local Farmers Market. 3rd Sunday every month.	<b>9.00 - 1.00pm</b>
<b>Trentham.</b>	Local Farmers Market. 3rd Saturday every month.	<b>9.00 - 1.00pm</b>
<b>Woodend.</b>	Local Farmers Market 1st Saturday every month.	<b>9.00 - 1.00 pm</b>

**ONE STEP PODIATRY**

**REDESDALE'S LOCAL  
PODIATRIST**

Where?  
**REDESDALE COMMUNITY  
HALL**

When?  
**FIRST SATURDAY MONTHLY**

How?  
**BOOKINGS ESSENTIAL:  
0430 730 615**

# REDESDALE COMMUNITY HALL & PAVILION AVAILABLE FOR HIRE

Redesdale gives you a choice of venues for your next party, meeting or event:

**Redesdale Hall:** 160 sqm floor space with stage and expansive catering kitchen, as well as on-site restrooms.

**Redesdale Pavilion:** 108 sqm floor space with panoramic windows overlooking the Redesdale Reserve Oval.

Either of these wonderful facilities are available for community events (1) or public use (2).

- (1) Community - Use of facility targeting community benefit.  
Entrance/participation fees are not charged by organiser.
- (2) Retail - Use of facility for private or business use.  
Entrance/participation fees may be charged by organiser.

**Equipment Rental** Check out the extensive furniture & equipment below to help you hold your event at home

Item:	Available	Item:	Available
Commercial sized steel roaster	1	4 burner BBQ	1
Marquee (Large), 6m x 12m	1	Table cloths, white	10
Marquee (Small), 3m x 3m	1	Chairs, green steel	80
Tables, plastic, 1.8m x 1m	10	Chairs, white plastic	80
Tables, wood, 1.8m x 1m	20	Umbrellas, charcoal	10

For all inspections and enquiries contact Redesdale Recreational Reserve Committee:

E: [3444reserve@gmail.com](mailto:3444reserve@gmail.com)

M: 0408 890 060



## THE REDESDALE HOTEL

Central Victoria's Favorite Country Pub

For bookings please call (03) 4405 0601

Wednesday & Thursday 12pm – 9pm Lunch & Dinner

Friday – Sunday 12pm – Late Lunch & Dinner

PUBLIC HOLIDAYS – Phone for details

Kitchen closes at 8pm everyday

### The Redesdale Hotel

2640 Heathcote - Kyneton Road

Redesdale Vic 3444

[info@theredesdalehotel.com.au](mailto:info@theredesdalehotel.com.au)



The Redesdale Hotel

[theredesdalehotel](https://www.facebook.com/theredesdalehotel)



[www.theredesdalehotel.com.au](http://www.theredesdalehotel.com.au)

## creative designs for your business

Proudly Sponsoring assistance to the **'Bridge Connection'**

logos menus flyers posters  
 invitations brochures magazines  
 business cards advertisements  
 letterheads with compliment slips  
 full business imaging

lyn ingles | graphic designer  
[blupen@bigpond.com](mailto:blupen@bigpond.com)  
 0429 911 980

**CV SHEDS** Est. 1975

**Quality supplier and installer of:**

- Farm Sheds - Work Shops
- Hay Sheds - Garages/Barns
- Quality RHS Frames
- All Australian Steel
- Shed Materials - purlins/ sheeting also available

*Been Building sheds in Central Victoria for over 40 years*

**Come and visit us at 12 Bourke St Kyneton**  
 Mon- Fri 8 am to 4.30 pm, other times by appointment  
 03 5422 6644 or [info@cvsheds.com.au](mailto:info@cvsheds.com.au) [www.cvsheds.com.au](http://www.cvsheds.com.au)



## RECIPE OF THE MONTH

### Dhal with crispy sweet potato and quick coconut chutney

86



This is so delicious I make a double batch and freeze one.

For the Sweet Potatoes.

2 medium size sweet potato, skins on roughly chopped into 1.5cm cubes

Salt and pepper

1 teaspoon cumin seeds

½ teaspoon fennel seeds

2 tablespoons olive oil

For the Dhal

2 cloves garlic, peeled and chopped

A thumb-size piece of fresh ginger, peeled and roughly chopped

1 green chilli, finely chopped

1 red onion, peeled and roughly chopped

1 teaspoon cumin seeds

1 teaspoon coriander seeds

1 teaspoon ground turmeric

1 teaspoon ground cinnamon

200g red lentils

1x400ml tin of coconut milk

400ml vegetable stock

2 large handfuls of spinach

A bunch of chopped fresh coriander

Juice of 1 lemon

For the Coconut Chutney

50g desiccated coconut

1 teaspoon black mustard seeds

10 curry leaves

1 tablespoon oil

A thumb sized piece of fresh ginger, grated

1 red chilli, finely chopped

Preheat your oven to 220C

Pour 150ml of boiling water over the coconut and leave to soak. Put your sweet potatoes on a roasting tray and add a good pinch of salt and pepper, the cumin and fennel seeds and a drizzle of olive oil. Roast in the oven for 20-25 minutes, until soft and sweet in the middle and crispy brown on the outside.

In a large saucepan, fry the garlic, ginger, chill and red onion in a little oil till soft. Grind the cumin and coriander seeds then add to the pan with the other spices and cook for a couple of minutes to toast and release the oils. Add the lentils, coconut milk and stock to the pan and bring to a simmer then turn the heat down and simmer for 30 minutes.

For the chutney, drain the coconut and place into a bowl. Fry the mustard seeds and curry leaves in a little oil until they begin to crackle, then pour the mixture over the coconut. Season with salt and pepper, stir in the ginger and chilli.

To finish your dahl, take it off the heat, stir in the spinach and allow to wilt. Stir in half the chopped coriander and lemon juice. Pile into bowls and top with the sweet potatoes, spoonful of the coconut chutney and the remaining coriander. Enjoy!

**Marisa Leahy**

# UNITING CHURCH

Morning Tea is shared 15minutes before each service



**Minister Munchies is on Wednesday  
and starts at 10am.**

For more information go to

[www.macedonrangesunitingchurch.org.au](http://www.macedonrangesunitingchurch.org.au)

## CATHOLIC CHURCH

**Redesdale** 2nd Sunday of each month 11am

You are warmly invited to

# BARFOLD

COMMUNITY  
CHURCH

10.00 am each Sunday

followed by morning tea

1691 Kyneton-Heathcote Rd, Barfold

Contact: Grant 0484 935 012

or John 0428 234 164



*Redesdale*

**Redesdale Yoga is back  
for 2024!!!!**

So, come and join our local yoga teacher – Tania – on  
**Wednesdays** and/or **Saturdays** to discover the many  
physical and mental benefits of yoga.

*No prior experience or minimum fitness level is required.*  
Just bring a mat, hand towel and water, wearing  
comfortable clothing.

**Redesdale Reserve Community Pavilion**

**Wednesdays 5:30pm – 6:30pm**

**Saturdays 9:00am – 10:30am**



For space availability and prices contact  
E: [glendenecottage@gmail.com](mailto:glendenecottage@gmail.com)  
M: 0403 659 741

REDESDALE MIA MIA  
PRIMARY SCHOOL PRESENTS

**REDESDALE MIA-MIA  
PLAY  
GROUP**

**TUESDAYS  
9:15 AM - 11**

FUN SOCIAL GATHERING FOR LOCAL FAMILIES.

All parents, young children and babies welcome.  
Redesdale MM Playgroup is registered with  
Playgroup Victoria.

Held weekly at Redesdale Mia Mia Primary School.

For more info email:  
[redesdalemiamiaplaygroup@gmail.com](mailto:redesdalemiamiaplaygroup@gmail.com)





# August Kitchen Garden

## Action

### Plant or sow in late winter



**PS - Plant Seedling**

**SD - Sow Direct**

**ST - Seedling Tray**

Artichokes – plant crowns

Asparagus - plant crowns

Rhubarb - plant crowns

Broad beans – sow direct (SD)

Broccoli – SD or Plant Seedlings (SD)

Cabbage – PS

Celtuce – SD or PS

Celery - PS

Coriander – SD or PS

Endive - PS

English Spinach – PS

Jerusalem Artichoke

Kale - PS

Kohlrabi – SD or PS

Lettuce – SD

Melons – undercover

Mint – SD in a pot to avoid spread in veg patch

Mustards - SD

Onion – SD or PS

Parsley – SD or PS

Parsnips - SD

Peas – SD soak overnight

Potatoes - SD

Radish – SD

Shallots – bulbs

Silverbeet -

Snow Peas – SD soak overnight

Swedes –

Tomatoes – get an early start. Sow seeds in pellets with seed raising mix.

Turnips - SD

Tomatoes – get a start on Toms and Zucchini's by planting seeds in pellets in seed raising mix for planting out in spring. Sit in a warm spot and keep moist. Feed weekly with half strength fertiliser.

Protect from cold/frost. Plant out in November.

Check your seed collection to see what you want for pre-spring planting.

Grow your seedlings in a warm protected spot until time to plant them out. Check old seeds for viability. Feed your lawns with slow release lawn food. Prune roses, feed and mulch. Plant summer blooming bulbs.

Harvest cumquats for making marmalade, Fertilise your citrus trees.

Happy winter in your Kitchen garden



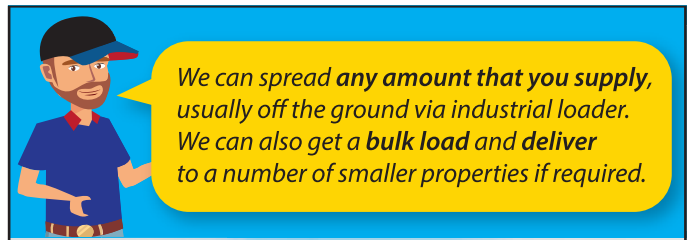
**RayWhite**

## Let us Bridge the gap in your selling needs!

Contact Ray White Kyneton for your property appraisal today.

Phone: 5422 2127

Ray White Kyneton  
2 High St, Kyneton VIC 3444  
E: reception.kyneton@raywhite.com



We can spread any amount that you supply, usually off the ground via industrial loader. We can also get a bulk load and deliver to a number of smaller properties if required.

## FERTILISER SPREADING SERVICE



**Contact for a quote**

Please contact  
**Carl 0412 144 936**  
or **David 0427 546 586**

No job too small,  
no job too big,

email: [carl@glendarling.com.au](mailto:carl@glendarling.com.au)  
119 Darlington Road Baynton VIC 3444

## Palmer Stevens & Rennick Barristers & Solicitors

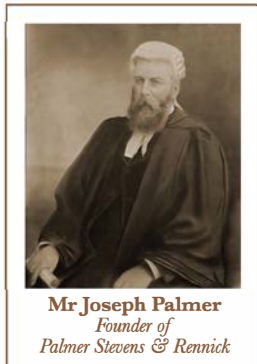
*Founded 1852*



## Palmer Stevens & Rennick

provide advice to clients all over Australia.

- Powers of Attorney
- Wills and Estates
- Criminal Law
- Conveyancing
- Property Law
- Family Law
- Agribusiness Law
- Commercial Litigation
- Traffic Law and Toll Fines
- Appearing in all Courts
- Pre purchase advice for large Agribusiness Assets
- Compensation for Government Acquisitions



Mr Joseph Palmer  
Founder of  
Palmer Stevens & Rennick

8 Jennings Street, Kyneton  
or P.O. Box 1, Kyneton Vic 3444  
Phone: (03) 5422 6500 Fax: (03) 5422 3385  
Email: [psr@psr.net.au](mailto:psr@psr.net.au)

## A good life deserves the best farewell

**WILLIAM  
FARMER**  
FUNERAL DIRECTORS

Andrew and Heather Hampton

151 McCrae Street Bendigo  
12 Victoria Street Eaglehawk

**P: 5441 5577**

[www.williamfarmer.com.au](http://www.williamfarmer.com.au)

*A tradition that continues...*