



ISSUE NO: 149 July 2024

For the Mia Mia- Redesdale Region including:

- Heathcote • Derrinal • Glenhope • Baynton • Sidonia • Barfold
- Langley V Sutton Grange • Elphinstone • Kyneton • Metcalfe

# BRIDGE CONNECTION COMMUNITY NEWSPAPER



<https://www.facebook.com/groups/897527781461431/>

# Clean-up Redesdale

– another annual RaDA event to improve Redesdale



## Redesdale 'clean-up crew' - making a difference to their community.

Saturday 1st June saw 18 community residents focus their efforts on cleaning the roadsides around Redesdale. This is an annual event, dovetailing into the national 'Clean-up Australia' movement. The main areas of attention included Kyneton-Redesdale Road from McNiffs Road to Clark Street, Lyell Road from Kyneton-Redesdale Road to Mt. Lofty Road, the Agnes Mudford Reserve, and 400m either side of the Lyell Road round-about.

Whilst the amount and variety of the rubbish carelessly dropped and discarded by uncaring members of the public and passing traffic was truly disappointing, we would prefer to remember the impressive enthusiasm and effort of the attending 'cleaners'.

A small barbecue lunch was provided by RRRRC for all as thanks for generously contributing an hour of their time.

## Thanks also go to:

- Members of the RaDA committee, who contributed more of their time and effort to ensure the clean-up was safe and well organised.
- Those members of the community who quietly, on any particular day, continue to pick up rubbish around their areas to make the presentation of Redesdale just that little bit better.
- Clean-up Australia, for providing gloves and collection bags.
- CoGB for allowing the collected rubbish to be dropped at the Heathcote Transfer Station at no cost.

# THANK YOU

# Everything in this ute is FREE to dispose of!

Many people may not realise that a lot of things can be disposed of for FREE at a local transfer station.

Sadly, rather than taking unwanted items to the transfer station, some people are doing the wrong thing and choosing to dump their unwanted goods in bushland areas.

Not only is dumped rubbish illegal, it is unacceptable, and we all need to reinforce this as a community.

If someone has the means to deliberately drive somewhere to dump rubbish, then they have the ability to go to a local transfer station.

E-waste, soft plastics, textiles, polystyrene-packaging, fridges, freezers, air conditioners and much more can be taken for free to one of the City's transfer stations located in Strathfieldsaye, Heathcote, Goornong or the Bendigo Recycle Shop located at the entrance to the Eaglehawk Landfill (please note that whitegoods are not accepted at the Goornong Transfer Station).

All items are sorted at the transfer stations. Some items are sold at the resale shop, while others are sent off for reuse or to be recycled and made into new products.

We are all responsible for the waste we produce and there are ways to dispose of most items responsibly and repurpose unwanted materials.

It's very important to not only consider this generation but future generations too, and we thank everyone for doing the right thing with their waste in the future.

Worthwhile information when cleaning items from your home and property.

Refer to website below for more information.



For more information visit ... [www.bendigo.vic.gov.au/waste](http://www.bendigo.vic.gov.au/waste)

## Recycle your old textiles

Recycle your old textiles for free at drop off points located at Eaglehawk Recycle Shop and the Strathfieldsaye, Heathcote and Goornong transfer stations.

**Commercial quantities of textiles are not accepted.**

Look for the bins to drop off your:

Clean clothing such as pants, skirts, jackets etc

Linen items such as sheets, pillow-cases blankets, towels, cushions and pillows, doonas

Pairs of shoes

Fabric and yarn off-cuts

## Textiles not accepted include:

Swim wear and underwear

Backpacks

Mattresses and mattress protectors

Curtains with hooks and eyelets

Re-useable shopping bags

# Editorial

Hello Readers,

Hope you are enjoying a "cleaned up" Redesdale. Thanks to all the people who helped.

We hope many of you take advantage of the Telstra pink truck which will be parked outside the hotel on Wednesday July 3rd from 8.30 am. (See page 4). On the same day, our MP, Annabelle Cleeland will be at the pub from 10.30 to listen to your concerns.

We welcome Chevelle Williams's introductory article about her role as a Canine Complimentary Therapist. (See page 7).

Keep warm!



Regina Bennett

Editor: Regina Bennett  
Ph: 0437514223

e: [bridgeconnection.editor@gmail.com](mailto:bridgeconnection.editor@gmail.com)

# Bridge Connection

## - Mission Statement -

The mission of **Bridge Connection** is to bring people together by:

1. Providing information about local issues, goals and events, and to celebrate local achievements,
2. Encouraging economic growth in the area
3. Fostering geographic identity, and
4. Providing a platform for public debate

Bridge Connection is published by local people who volunteer, for local people as a **free paper** and on line at **redesdale.net** and via **face-book**



<http://www.facebook.com/groups/897527781461431/>

Keep in touch with us and what's happening in our community.



[www.redesdale.net](http://www.redesdale.net)



Redesdale & District Association



[redesdale\\_vic](https://www.instagram.com/redesdale_vic)



# BRIDGE CONNECTION COMMUNITY NEWSPAPER

## Advertising Rates/Sizes

Size	Height x Width	Price per issue	10 Editions
Business Card	55mm x 90mm	\$25	\$250
Quarter Page	130mm x 90mm	\$50	\$500
Half Page	130mm x 190mm	\$95	\$950
Full Page	270mm x 190mm	\$175	\$1,750

Colour Advertisements plus 20%.

**Please Note:  
COPY DEADLINES  
17th OF EACH MONTH**

Please send editorial or advertising copy to: [bridgeconnection.editor@gmail.com](mailto:bridgeconnection.editor@gmail.com) or by post to **Regina Bennett 3465 Burke & Wills track Mia Mia 3444**. For other editorial enquiries, please phone **0437 514 223**

### Bridge Connection Distribution

950 Copies printed and distributed to Redesdale Mia Mia Region, including Barfold, Baynton, Derrinal, Elphinstone, Glenhope, Kyneton, Langley, Metcalf, Sidonia and Sutton Grange

*Disclaimer: The Bridge Connection Inc. Committee wishes to advise that the views or remarks expressed in this publication are not necessarily the views of the volunteer Bridge Connection Inc. editorial or production team and no service or endorsement is implied by the listing of Advertisers, sponsors or contributors. Although every effort is taken in reproducing and printing advertisements correctly, we take no responsibility for errors.*

## Management Committee

President : **Gloria Pocock**

Secretary: **Regina Bennett** (03) 5425 5402  
[bridgeconnection.secretary@gmail.com](mailto:bridgeconnection.secretary@gmail.com)

Treasurer: **Marisa Leahy** 0415 384 217

Magazine: **Regina Bennett - Editor** 0437 514 223

# Telstra mobile connectivity at Redesdale

Telstra mobile connectivity at Redesdale – An update from the local Telstra team

As a Regional Engagement Manager for Telstra who lives locally, we know that some customers in Redesdale have challenges accessing a mobile signal.

Our local team are aware of the issue and are working to improve mobile connectivity in the area.

Customers on our mobile network at Redesdale receive signal from our tower at Mount Alexander across a large footprint. Given the distance Redesdale is from the tower, and the challenges presented by the terrain of the area, customers are generally on the edge of coverage.

This can mean that the coverage quality can vary based on where you are and type of device you have and if you are using any sort of external antenna or booster.

However, there is one solution that residents can implement right now to boost connectivity in your house or business, and it is free. If they have access to a Wi-Fi connection through your home internet and a relatively new and popular branded mobile phone, you may be able to use Wi-Fi Calling.

Wi-Fi Calling allows you to make and receive phone calls and texts and use data over a home Wi-Fi connection. More information on Wi-Fi calling can be found at: <https://www.telstra.com.au/support/mobiles-devices/telstra-wifi-calling>

For customers who live in those parts of Redesdale that have challenges connecting to a mobile signal due to terrain, vegetation or building type, an option to improve connectivity to the Telstra network both inside the home and in your vehicle is via a Telstra Go repeater and an external antenna.

More information on the TGO repeater and external antennas can be found at <https://www.telstra.com.au/coverage-networks/network-coverage-extension-devices>

The longer-term solution to improve mobile connectivity in the Redesdale area is to build a new mobile tower. However, there are many steps we would need to take before this occurs

and projects of this nature can have long lead times from approval through to build.

Our local team will continue to work hard for a longer-term solution which may involve third party contributions via any potential future government funding programs. We will continue to engage the Redesdale community on this option.

Our team know the importance of digital connectivity as we live in the region. We are committed to solving for the current issues and providing new improved connectivity in the future.

What if I need further advice?

As the Regional Engagement Manager in the local Telstra team, I am happy to assist with your mobile connectivity questions and I can be contacted at the below email address or by calling 0429869861. [telstranwvic@team.telstra.com](mailto:telstranwvic@team.telstra.com)



**WEDNESDAY  
JULY 3**

**8.30 - 3PM**

**REDESDALE**

**Look for the Telstra pink truck**



**Come and talk to the Telstra team about your mobile phone connectivity issues. All welcome.**

# Knitting Crochet and Painting group

Come along and have fun filled afternoon every Thursday from 1pm till 3pm at the Redesdale Pavillion.

Group is currently working on nextyears Yarn-bomming project and having a go at watercolour painting.



*Above Gloria Pocock*

*Below Penny Patterson*



# Knitting & Crochet GROUP



Get back to Knitting or Crochet...

- Learn new techniques
- Learn to knit or crochet
- Possible knitting and crocheting for charity.

**Every Thursday 1pm - 3pm  
at the Redesdale Reserve Pavilion**

If you are interested in joining please contact:  
Gloria Pocock: [gapocock@bigpond.com](mailto:gapocock@bigpond.com) or  
Regina Bennett: [reginabennett@bigpond.com](mailto:reginabennett@bigpond.com)



*Neurographic Watercolour*

# SAVE the DATE



**162nd Kyneton Agricultural Show**

**FRI 15 & SAT 16 NOVEMBER 2024**



[www.kynetonshow.org.au](http://www.kynetonshow.org.au)

Meet your local Councillors

## Eppalock Ward



Friday July 5, 10.30am - 12pm  
 Agnes Mudford Reserve,  
 Kyneton-Heathcote Road,  
 Redesdale

*Come and share a coffee with Councillors and discuss the important issues in your ward.*



**Deputy Mayor  
 Cr Matthew Evans**  
 M: 0437 867 028  
 E: [m.evans@bendigo.vic.gov.au](mailto:m.evans@bendigo.vic.gov.au)

**Cr Margaret O'Rourke OAM**  
 M: 0429 061 096  
 E: [m.orourke@bendigo.vic.gov.au](mailto:m.orourke@bendigo.vic.gov.au)

**Cr Greg Penna**  
 M: 0429 721 958  
 E: [g.penna@bendigo.vic.gov.au](mailto:g.penna@bendigo.vic.gov.au)

 [www.bendigo.vic.gov.au](http://www.bendigo.vic.gov.au) 

# Insure our way, the local way




Our team at Elders insurance Kyneton can look after all your insurance needs and is totally worthy of your trust. Because unlike other insurance providers we actually live and work in your community and take the time to come to you and understand your situation. We can even approve some claims on the spot.


Contact **Melanie Duggan**  
 for a personalised quote today  
**03 5423 3007**

 [eldersinsurancekyneton@elders.com.au](mailto:eldersinsurancekyneton@elders.com.au)  
 83 Edgecombe Road , Kyneton  
 Elders Insurance Kyneton

Falconer Holdings Pty Ltd aff RJ & SA Falconer Family Trust ABN 27733987494 trading as Elders Insurance Kyneton AFI No. 285618 is an Authorised Representative of Elders Insurance (Underwriting Agency) Pty Limited (ABN 56 138 879 026, AFSL 340965) (EUA), EUA, acting under its own AFSL. is authorised to distribute Elders Insurance products on behalf of QBE Insurance (Australia) Limited (ABN 78 003 191 035, AFSL 239545), the product issuer. Visit [www.eldersinsurance.com.au](http://www.eldersinsurance.com.au) to consider the Product Disclosure Statement and any applicable Target Market Determination to decide if the product is right for you.



# LITTLE FREE LIBRARY



want to know more?  
 visit [redesdale.net](http://redesdale.net)

**FREE LIBRARY**

Please 'donate' by simply adding Books, Magazines and DVD's to the cabinet... *Thank you*

Located behind the  
 Community Notice Board  
 Inside the Redesdale Recreation Reserve  
**Redesdale Recreation Reserve,**  
 2631 Kyneton - Redesdale Road  
 Redesdale Vic 3444

# Canine Complementary Therapist

Hello Bridge Connection Readers!

I am the regions Canine Complementary Therapist certified in Canine Myo-Functional therapy (CMFT), Carnivore Nutrition (HCN) and Canine Conditioning and Fitness. I am also a small animal first responder certified in CPR and 1st Aid. Some of you may also know me from my farm work, dingoes, dog training or even as the woman who drives b doubles. Since losing my support dog Lolli in 2019, I am now focusing on canine health with LLPetsHealth and Lollis Lollies where the rewards are constant and my heart is full.

This month I am sharing information of what I actually do.

CMFT is a range of massage techniques that focus on the muscle fibers and fascia to release pain and tension, realign the body, create better flexibility, manually detox the body and increase absorption of nutrients where they are most needed.

When dogs experience pain, whether it be muscular, skeletal or fascial pain, it can have a knock-on effect throughout the whole dog and even increase behavioral issues.

Fascia is an interesting area of the body. Superficial fascia is directly underneath the skin and is a light viscous substance, and connects and supports all facets of the body, it contains blood vessels, nerves and transports important nutrients. Deep fascia is a dense structured casing that surrounds each muscle and gives the whole-body strength and so much more. CMFT has a strong focus on working with the whole body, it also incorporates movement, stretching and strengthening exercises.

As a nutritionist, I focus holistically around a Biological Appropriate Raw Feeding (BARF) style and I specialize in natural supplements for best outcomes for pets with ailments and minimizing the impact of human daily life to produce the best life for our dogs and cats. But if Raw feeding isn't your thing, I still assist clients in gaining the best feeding outcomes for your pet.

Canine Conditioning and Fitness incorporates movement. Structured to help the animal use the muscles correctly and re-engage muscles that may have atrophied due to injury or lack of usage. It's a great way to support dogs with orthopedic issues like elbow and hip dysplasia, ligament injuries and pre and post orthopedic surgery, and useful for dogs with arthritis and other joint conditions and is actually a great way to spend some quieter intimate time training your dog.

Many people are under the impression that

complementary therapy is woo woo or designed to take over a veterinarian's job, but this is not true at all. Complementary therapy is exactly that, it is complementary to modern medicine and backed by scientific evidence and research. I personally work closely with Vets to insure the best outcomes for your dog and pets. A lot of Complementary therapy is management of pre-existing conditions and also keeping dogs in peak performance. I'm sure many of you have had massages and nutritional adjustments so you will know how good you can feel, and now your pets can have that too!

If you would like to know more, my **website is [www.lollislollies.com.au](http://www.lollislollies.com.au)** or text or call me on **0431 221 604**

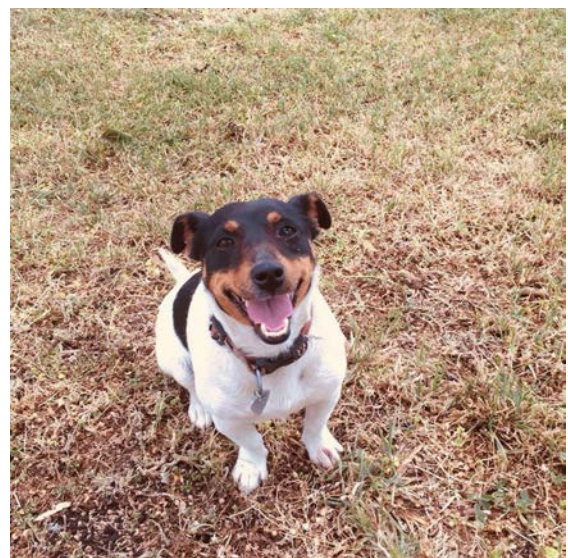
If anyone has any subjects in particular that they would like me to discuss in the coming months please email me with your suggestions to [lolislollies@gmail.com](mailto:lolislollies@gmail.com)

I am also taking expressions of interest in holding group talks in the region, focusing on canine health and complementary approaches.

I am looking forward to being a part of Bridge Connection each month and sharing my knowledge with the community and getting our area ahead of others in animal health and welfare.

Pats for all of your pets,

Chevelle Williams, CMFT, HCN, DipCanCom, DipMBSR





**Annabelle**  
**CLEELAND MP**  
 Proudly supporting the  
**Redesdale Community**  
 🌐 Annabellecleeland.com.au  
 📍 25 Bridge St E, Benalla  
 📞 Annabelle4Euroa 📞 03 5762 1600  
 📧 Annabelle.cleeland@parliament.vic.gov.au *Member for Euroa*

**Nationals MP to talk telecommunications in Redesdale**

Nationals Member for Euroa Annabelle Cleeland will be in Redesdale in July to discuss the ongoing telecommunications and connectivity issues in town.

Ms Cleeland will be at the Redesdale Hotel on July 3 to discuss the local telecommunications challenges, as well as have a general chat with residents about her role as MP and how she can help with State Government issues.

“After speaking with residents in Redesdale, it was clear there are serious concerns about the quality and reliability of telecommunications in the local area,” Ms Cleeland said.

“I have been meeting with Telstra as we work through some of the telecommunications challenges that Redesdale and its surrounding areas are suffering from.

“I am hoping to share the local concerns with Telstra so they can understand just how much of an impact the lack of reliable phone and internet reception is having on the community.”

Ms Cleeland has previously stressed the need for telecommunications to be considered as critical infrastructure, recently meeting with the Minister for Government Services to advocate to Federal Government.

“Strengthening our telecommunications infrastructure is an essential step to ensuring residents are not left without access to their phones during emergencies such as power outages, floods, and fires,” Ms Cleeland said.


“Mobile phone reception is undeniably critical infrastructure in today’s world, serving as the primary connector between individuals and emergency services.

“During crises such as natural disasters or accidents, reliable mobile reception is essential for emergency response coordination, dissemination of vital information, and enabling individuals to call for help or assistance.

“With so many emergency response measures, such as CFA or SES notifications and evacuation messages, now being carried out through text messages, it is critical that telecommunications infrastructure can withstand actual emergencies.

“I have met with the Minister to discuss the importance of this and have been assured that this will be followed up with Federal Ministers tasked with this responsibility.”

**More details about Ms Cleeland’s visit to Redesdale below**



**Annabelle Cleeland MP**  
**Redesdale Town Meeting**


**Wednesday 3rd of July Starts 10:30 am**  
 @ The Redesdale Hotel

**Telstra will be present to discuss solutions to the network issues.**

**Discussions regarding ongoing road issues.**

**An opportunity to connect with Annabelle Cleeland MP and discuss other local issues.**

*See you there!*





ADVERTISEMENT

# Lisa Chesters MP

FEDERAL MEMBER  
FOR BENDIGO

☎ 5443 9055

🌐 [lisachesters.org](http://lisachesters.org)

Authorised by Lisa Chesters, ALP,  
16 Myers St, Bendigo



charities, to support delivery of 40,000 social and affordable homes under the Housing Australia Future Fund and National Housing Accord.

This significant new investment is part of the \$32 billion in new housing initiatives the Albanese Labor Government is delivering through our Homes for Australia plan.

The Albanese Labor Government has already delivered \$2 billion to states and territories through the Social Housing Accelerator to deliver around 4,000 new social homes.

#### HOMES FOR AUSTRALIA FUNDING BY STATE AND TERRITORY

State and territory

\$9.3 billion National Agreement on Social Housing and Homelessness (estimated funding 2024-25 to 2028-29)

New South Wales	\$2.82 billion
Victoria	\$2.36 billion
Queensland	\$1.86 billion
Western Australia	\$993.2 million
South Australia	\$625.1 million
Tasmania	\$195.3 million
Northern Territory	\$290.2 million
Australian Capital Territory	\$157.4 million

The Albanese Labor Government's Homes for Australia plan will deliver significant new funding across the country to build more homes with a new national housing agreement beginning on 1 July.

As part of the new 5-year National Agreement on Social Housing and Homelessness which starts on 1 July 2024, states and territories will share in \$9.3 billion.

The funding will help to combat homelessness, provide crisis support and build and repair social housing.

This new agreement includes a doubling of Commonwealth funding for homelessness, which state and territory governments must match.

States and territories will also share in a further \$1 billion outside of the agreement directed towards crisis and transitional accommodation for women and children fleeing domestic violence, and youth, through Housing Australia.

The Albanese Labor Government will also help nearly 1 million Australian households with the cost of rent by delivering a 10 per cent increase to the maximum rates of Commonwealth Rent Assistance, as part of the first back-to-back increase in more than 30 years.

The Government's Budget last month also included:

Training more tradies to build the homes Australia needs with 20,000 Fee Free TAFE and pre-apprenticeship places for the construction industry.

Working with the higher education sector on new regulation to require universities to increase student accommodation, taking pressure off the rental market.

Increasing the Government's line of credit to Housing Australia by \$3 billion, and liability cap by \$2.5 billion.

Providing up to \$1.9 billion in concessional finance for community housing providers and other

Support your **community newspaper** the

## 'Bridge Connection'

who is supporting **your community**.

Visit: **[www.redesdale.net](http://www.redesdale.net)**  
**district, events, businesses and news.**

For more information turn to **page 3**  
for advertising rates or call and chat to  
Editor - **Regina Bennett 5425 5402.**

**'Bridge Connection' Community Newspaper**

Need to advertise your **business locally?**

Support the

## 'Bridge Connection'

it is a great way to let the community know you are **open for business.**

For more information turn to **page 3**  
for advertising rates or for more information phone

Editor - **Regina Bennett 5425 5402**

**'Bridge Connection' Community Newspaper**



**Redesdale 48.80mm Year to date 304.60mm**

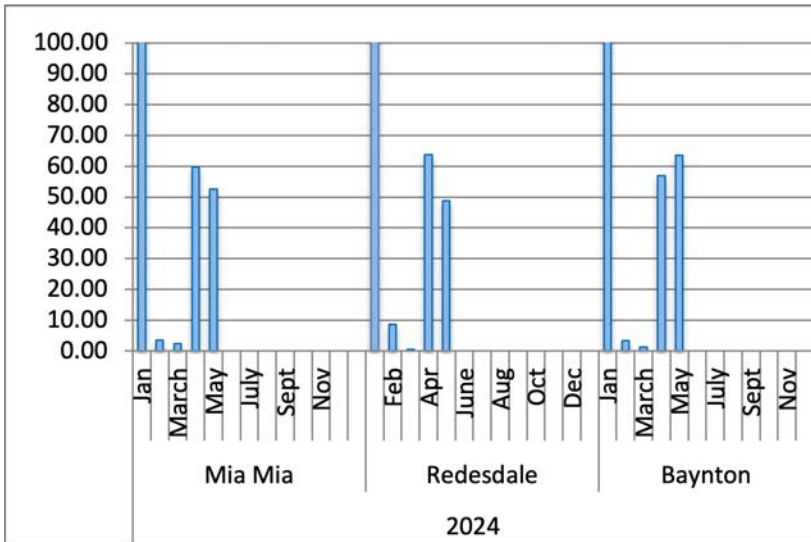
**Mia Mia 52.50mm Year to date 320.25mm**

**Baynton 63.60mm Year to date 333.80mm**

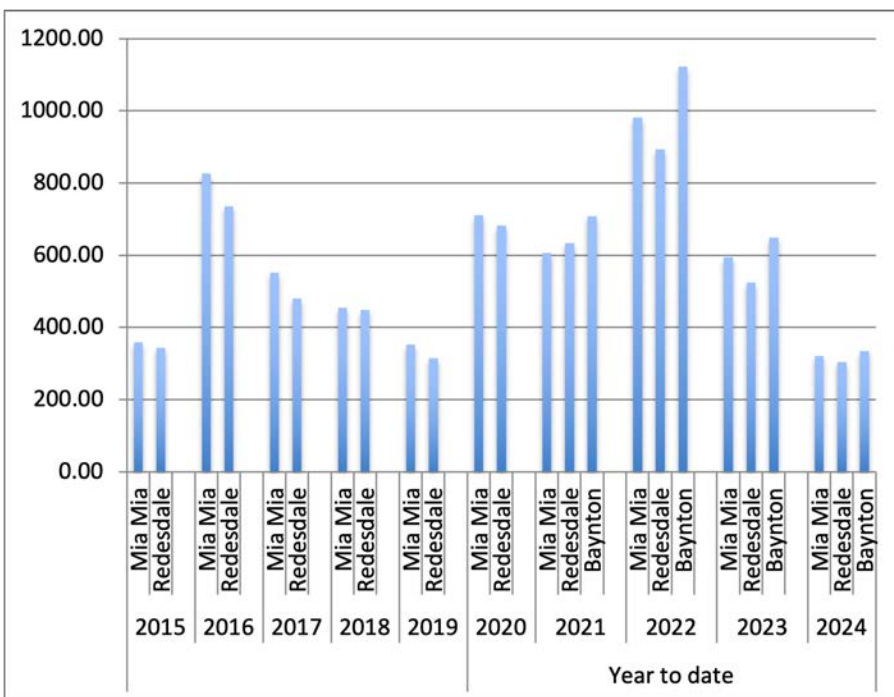
The average yearly rainfall for **Redesdale** is about 601mms.

Thank you to **Helen Bennett** for the **Mia Mia** readings & **Belinda Ryan** for **Baynton** readings

### Year Totals for Previous Years



<b>2017</b>	Mia Mia	551.75
	Redesdale	479.60
<b>2018</b>	Mia Mia	455.00
	Redesdale	448.40
<b>2019</b>	Mia Mia	352.00
	Redesdale	315.00
<b>2020</b>	Mia Mia	711.25
	Redesdale	682.85
	Baynton	707.80
<b>2021</b>	Mia Mia	593.50
	Redesdale	634.40
	Baynton	707.80
<b>2022</b>	Mia Mia	981.50
	Redesdale	894.00
	Baynton	1122.30
<b>2023</b>	Mia Mia	593.90
	Redesdale	524.40
	Baynton	648.40





# Redesdale & Surrounds Comming Events

## JULY

**Wed 3rd July** Annabelle Cleeland MP Redesdale town meeting @ Redesdale Hotel

**Wed 3rd July 8.30 - 3pm** Telstra pink Truck Telstra connectivity issues

**Fri 5th July** Eppalock Ward Coffee with Council 10.30 till 12pm Agnes Mudford Reserve

**Fri: 19th-21st** Bendigo ,Australian Sheep and Wool Show Prince of Wales Showgrounds,

**Fri 28 June - 14 July**  
Electric Wonderland

**Fri 28 June - 14 July**  
Stars On Ice

**Fri 19 - 21 July**  
Australian Sheep and Wool Show  
Prince of Wales Showgrounds,

**Fri 19 July**  
Women of Wool  
Prince of Wales Showgrounds,

## October

**Sat- Sun 19th 20th**  
local open gardens

## November

**Tue 5th Nov**  
Melbourne Cup day

**for more information - [redesdale.net](https://www.redesdale.net)**

- <https://www.heathcote.org.au- kyneton.org.au>
- <https://www.bendigoregion.com.au>
- <https://www.bendigoregion.com.au/visit-castlemaine-maldon>

<b>Ballan</b>	Local Farmers and Makers Market. 2nd Saturday of every month.	<b>9.00 - 1.00pm</b>
<b>Castlemaine.</b>	Local Farmers Market. 1st Sunday of every month.	<b>9.00 - 1.00pm</b>
<b>CFM.</b>	Weekly Market, Wednesday.	<b>2.30 - 5.30pm</b>
<b>Clunes.</b>	Local Farmers Market 2nd Sunday each month.	<b>8.30 - 1.00pm</b>
<b>Creswick.</b>	Local Farmers Market 3rd Saturday every month.	<b>9.00 - 1.00pm</b>
<b>Daylesford.</b>	Local Market. Every Sunday.	<b>8.00 - 3.00pm</b>
<b>Gisborne.</b>	Olde Time Market. 1st Sunday every month.	<b>9.00. - 2.00pm</b>
<b>Kyneton.</b>	Local Farmers Market. 2nd Saturday every month.	<b>8.30 - 1.00pm</b>
<b>Lancefield.</b>	Local Farmers Market. 4th Saturday every month.	<b>9.00 - 1.00pm</b>
<b>Maldon.</b>	Local Farmers Market. 2nd Sunday every month.	
<b>Malmsbury.</b>	Local Farmers Market. 3rd Sunday every month.	<b>9.00 - 1.00pm</b>
<b>Talbot.</b>	Local Farmers Market. 3rd Sunday every month.	<b>9.00 - 1.00pm</b>
<b>Trentham.</b>	Local Farmers Market. 3rd Saturday every month.	<b>9.00 - 1.00pm</b>
<b>Woodend.</b>	Local Farmers Market 1st Saturday every month.	<b>9.00 - 1.00 pm</b>

# REDESDALE COMMUNITY HALL & PAVILION AVAILABLE FOR HIRE

Redesdale gives you a choice of venues for your next party, meeting or event:

**Redesdale Hall:** 160 sqm floor space with stage and expansive catering kitchen, as well as on-site restrooms.

**Redesdale Pavilion:** 108 sqm floor space with panoramic windows overlooking the Redesdale Reserve Oval.

Either of these wonderful facilities are available for community events (1) or public use (2).

- (1) Community - Use of facility targeting community benefit.  
Entrance/participation fees are not charged by organiser.
- (2) Retail - Use of facility for private or business use.  
Entrance/participation fees may be charged by organiser.

**Equipment Rental** Check out the extensive furniture & equipment below to help you hold your event at home

Item:	Available	Item:	Available
Commercial sized steel roaster	1	4 burner BBQ	1
Marquee (Large), 6m x 12m	1	Table cloths, white	10
Marquee (Small), 3m x 3m	1	Chairs, green steel	80
Tables, plastic, 1.8m x 1m	10	Chairs, white plastic	80
Tables, wood, 1.8m x 1m	20	Umbrellas, charcoal	10

For all inspections and enquiries contact Redesdale Recreational Reserve Committee:

E: [3444reserve@gmail.com](mailto:3444reserve@gmail.com)

M: 0408 890 060



## THE REDESDALE HOTEL

Central Victoria's Favorite Country Pub

For bookings please call (03) 4405 0601

Wednesday & Thursday 12pm – 9pm Lunch & Dinner

Friday – Sunday 12pm – Late Lunch & Dinner

PUBLIC HOLIDAYS – Phone for details

Kitchen closes at 8pm everyday

### The Redesdale Hotel

2640 Heathcote - Kyneton Road

Redesdale Vic 3444

[info@theredesdalehotel.com.au](mailto:info@theredesdalehotel.com.au)



The Redesdale Hotel

[redesdalehotel](https://www.facebook.com/redesdalehotel)



[www.theredesdalehotel.com.au](http://www.theredesdalehotel.com.au)

## creative designs for your business

Proudly Sponsoring  
assistance to the 'Bridge Connection'

logos menus flyers posters  
invitations brochures magazines  
business cards advertisements  
letterheads with compliment slips  
full business imaging

lyn ingles | graphic designer  
[blupen@bigpond.com](mailto:blupen@bigpond.com)  
0429 911 980

**Quality supplier and installer of:**

- Farm Sheds - Work Shops
- Hay Sheds - Garages/Barns
- Quality RHS Frames
- All Australian Steel
- Shed Materials - purlins/ sheeting also available

*Been Building sheds in Central Victoria for over 40 years*

**Come and visit us at 12 Bourke St Kyneton**  
Mon- Fri 8 am to 4.30 pm, other times by appointment  
[03 5422 6644](tel:0354226644) or [info@cvsheds.com.au](mailto:info@cvsheds.com.au) [www.cvsheds.com.au](http://www.cvsheds.com.au)



## RECIPE OF THE MONTH

### Seven-Layer Salad

85



#### Ingredients:

- 1 head iceberg lettuce, chopped
- 1 cup cherry tomatoes, halved
- 1 cup cucumbers, sliced
- 1 cup frozen peas, thawed
- 6 hard-boiled eggs, chopped
- 2 cups shredded cheddar cheese
- 8 slices bacon, cooked and crumbled
- Dressing:
  - 1 cup mayonnaise
  - 1/2 cup sour cream
  - 2 tablespoons sugar
  - Salt and pepper to taste

#### Directions:

1. In a large clear bowl, layer the salad ingredients starting with iceberg lettuce at the bottom, followed by cherry tomatoes, cucumbers, frozen peas, hard-boiled eggs, shredded cheddar cheese, and finally, the crumbled bacon on top.
2. In a small bowl, whisk together mayonnaise, sour cream, sugar, salt, and pepper until smooth.
3. Spread the dressing evenly over the top layer of bacon, ensuring to cover the edges to seal the salad.
4. Cover and refrigerate for at least 4 hours, or overnight, to allow flavors to meld.
5. Serve chilled, making sure to scoop down deep to get a bit of each layer

*Jamie Oliver*

ONE STEP  PODIATRY

## REDESDALE'S LOCAL PODIATRIST

Where?

REDESDALE COMMUNITY  
HALL

When?

FIRST SATURDAY MONTHLY

How?

BOOKINGS ESSENTIAL:  
0430 730 615

Turn your house  
into a home   
with Tucks  
locally made products



- Aluminium and Timber Windows
- Window Replacements • Security Doors
- Shower Screens • Wardrobe Doors

We are in your area regularly  
and offer a **FREE** measure  
and quote service.

*We can offer supply and install prices.*



**Tucks  
Windows  
BENDIGO**

Celebrating 43 Years  
providing top quality  
products and  
professional  
friendly service.

P: 03 5446 8855

E: quotes@tuckswindows.com.au

[www.tuckswindows.com.au](http://www.tuckswindows.com.au)

# UNITING CHURCH

Morning Tea is shared 15minutes before each service



**Minister Munchies is on Wednesday  
and starts at 10am.**

For more information go to

[www.macedonrangesunitingchurch.org.au](http://www.macedonrangesunitingchurch.org.au)

## CATHOLIC CHURCH

**Redesdale** 2nd Sunday of each month 11am

You are warmly invited to

# BARFOLD

COMMUNITY  
CHURCH

10.00 am each Sunday

followed by morning tea

1691 Kyneton-Heathcote Rd, Barfold

Contact: Russell 0484 700 909



Redesdale

**Redesdale Yoga is back  
for 2024!!!!**

So, come and join our local yoga teacher – Tania – on  
**Wednesdays** and/or **Saturdays** to discover the many  
physical and mental benefits of yoga.

*No prior experience or minimum fitness level is required.*  
Just bring a mat, hand towel and water, wearing  
comfortable clothing.

**Redesdale Reserve Community Pavilion**

**Wednesdays 5:30pm – 6:30pm**

**Saturdays 9:00am – 10:30am**



For space availability and prices contact  
E: [glendenecottage@gmail.com](mailto:glendenecottage@gmail.com)  
M: 0403 659 741

REDESDALE MIA MIA  
PRIMARY SCHOOL PRESENTS

**REDESDALE MIA-MIA  
PLAY  
GROUP**

**TUESDAYS**  
9:15 AM - 11

FUN SOCIAL GATHERING FOR LOCAL FAMILIES.

All parents, young children and babies welcome.  
Redesdale MM Playgroup is registered with  
Playgroup Victoria.

Held weekly at Redesdale Mia Mia Primary School.

For more info email:  
[redesdalemiamiaplaygroup@gmail.com](mailto:redesdalemiamiaplaygroup@gmail.com)

# July Kitchen Garden Action

## Plant or sow now



PS - Plant Seedling

SD - Sow Direct

ST - Seedling Tray

### Plant or sow now

Artichokes – plant crowns

Asparagus - plant crowns

Rhubarb - plant crowns

Beetroot - PS

Broad beans – sow direct SD

Broccoli - PS

Cabbage – PS

Carrot - SD

Cauliflower – PS

Celery SD

Coriander – SD

Endive - plant seedlings PS

English Spinach – PS

Fennel – PS

Leek PS

Lettuce - SD

-Mint – SD in a pot to avoid spread in veg patch

Mustard Greens - PS

Onion – SD

Oregano - PS

Peas – SD (soak overnight before planting out)

Snow Peas – SD (soak overnight before planting out)

Shallots – PS

Silver beet -PS

Spinach - PS

Radish- SD

Raspberry canes are available for planting this month

Bare rooted fruit trees are also available

Potatoes – start chitting spuds in old egg cartons

Celery likes to be kept moist

Cauliflowers – as the heads appear and you want a white head, pull dry leaves over the heads and tie up with string.

Broccoli –harvest main head and watch for side shoots to develop

Tomatoes – get a start on Toms by planting seeds in seed trays for planting out in spring. Protect from the cold/frosts

Grow sprouts near a warm window in a glass jar with gauze across the mouth held with a rubber band. Rinse daily. Use when sprouted e.g. Mung, Alfalfa

Continue to check Brassicas for snails, slugs, caterpillars and grey aphids on stems and leaf joins.

Prepare empty beds for spring planting with planting of green manure.

Wisteria can be pruned this month. Cut them back to 2 or 3 buds from the base

Prune hydrangeas just above a fat bud.

Treat peaches for leaf curl. Spray with a solution of either lime sulphur or copper hydroxide, covering all stem, branch and trunk surfaces. Apply a follow-up spray in late winter, just before leaf and bud swell.

July 28th is National Tree Day – why not plant a tree!

Happy winter in your Kitchen garden



## Let us Bridge the gap in your selling needs!

Contact Ray White Kyneton for your property appraisal today.

Phone: 5422 2127

Ray White Kyneton  
2 High St, Kyneton VIC 3444  
E: reception.kyneton@raywhite.com

*bARt 'n' PRINt*  
Established in 1977

Newly equipped

# Signshop

- Vehicle signage
- Office signage
- Wedding & Event signs
- Building signage
- Wall wraps

20-22 Deborah Street, Bendigo

E info@bartnprint.com.au

T 5441 6600



[bartnprint.com.au](http://bartnprint.com.au)

## Palmer Stevens & Rennick

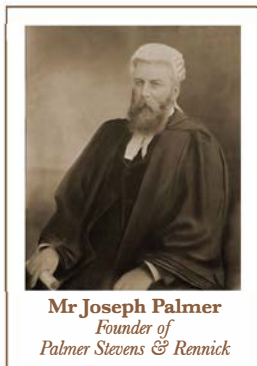
Barristers & Solicitors *Founded 1852*



## Palmer Stevens & Rennick

provide advice to clients all over Australia.

- Powers of Attorney
- Wills and Estates
- Criminal Law
- Conveyancing
- Property Law
- Family Law
- Agribusiness Law
- Commercial Litigation
- Traffic Law and Toll Fines
- Appearing in all Courts
- Pre purchase advice for large Agribusiness Assets
- Compensation for Government Acquisitions



Mr Joseph Palmer  
Founder of  
Palmer Stevens & Rennick

8 Jennings Street, Kyneton  
or P.O. Box 1, Kyneton Vic 3444  
Phone: (03) 5422 6500 Fax: (03) 5422 3385  
Email: [psr@psr.net.au](mailto:psr@psr.net.au)

## A good life deserves the best farewell

**WILLIAM FARMER**  
FUNERAL DIRECTORS

Andrew and Heather Hampton

151 McCrae Street Bendigo  
12 Victoria Street Eaglehawk

P: 5441 5577

[www.williamfarmer.com.au](http://www.williamfarmer.com.au)

*A tradition that continues...*